



Palfrey Junior School Newsletter

Dale Street ,Palfrey, Walsall, WS1 4AH Telephone:- 01922 721092

www.palfrey-j.walsall.sch.uk

Friday 3rd October 2025 Issue 4

Polite Reminder

If you are dropping off/ collecting your children by car please be mindful & considerate to local residents, other road users & pedestrians. We have had some complaints recently so please do not stop in the middle of the road, block access to roads or driveways or use private car parks. Thank you for your co-operation.

Golden Certificates

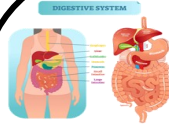
Well done to the following children who have been awarded a Golden Certificate this week for fantastic work , behaviour and attitude to learning:

Cl 1 Isa R	Cl 6 Hafsa S
Cl 2 Rawad B	Cl 6 Ahmad A
Cl 3 Umar N	Cl 7 Habib I
Cl 4 Abobaker H	Cl 9 Khadijah H
Cl 4 Hooria N	Cl 8 Rasheed- Ahmad N
Cl 4 Abida T	Cl 10 Courtney V
Cl 5 Yasin K	Cl 11 Aliza A

Cl 2 Haamid L
Cl 4 Maryam B
Cl 4 Ruhan W
Cl 6 Aysha S
Cl 7 Zoya B
Cl 10 Abdulaziz Y
Cl 11 Arnav S

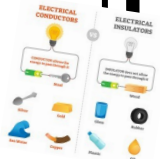


This Week In School



Year 3 - have been ordering numbers and adding/subtracting multiples of 10 and near multiples in maths, they have been writing the next part of Roy the Zebra - 'Lucy's Great Escape' in literacy and in science they have been learning all about the digestive system.

Year 4 - have started to look at adding and subtracting to get to the next 100 in maths, they have read a story with a dilemma and will be writing their own dilemma stories next week in literacy and in science, they have been testing material to discover if they are electrical conductors or insulators.



Year 5 - have been identifying the properties of 2D shapes and lines of symmetry in maths, they have researched the UN and created information posters and in science, they have been learning about and comparing the life cycle of different mammals.

Year 6 - have been revising how to use coordinating and subordinating conjunctions correctly in literacy, they have drawn a chosen animal in different positions ready to use in their Henry Rousseau inspired art work and in science they have created classification keys.



Home Reading Pack

Reading to children at home is one of the most effective ways of improving literacy. The Home Reading pack has advice for parents to get the best out of this time:

- Reading to your children – some common questions
- Five different reading styles to try
- Top ten tips for home reading
- Barriers to reading to your kids...& how to knock them down
- Reading rewards
- Home reading chart
- Reading Star badges



Have a look at the pack on our website and also included as an attachment with this weeks newsletter .

[Home Reading Pack available on the school website](#)



1st October

STEM WORKSHOP

SCIENCE. TECHNOLOGY. ENGINEERING. MATHEMATICS



I REALLY ENJOYED FOLLOWING THE INSTRUCTIONS TO MAKE THE CAR. WE HAD TO BE ACCURATE OR OUR MOTORS WOULD NOT POWER THE CAR.

ONCE THE CAR WAS ASSEMBLED THEY COULD DECORATE IT



THE CHILDREN HAD TO THEN CODE THE CARS TO FOLLOW A ROUTE ON A MAT.

I FOUND ESTIMATING THE DISTANCES EASY BUT THE ANGLES A LITTLE MORE TRICKER. I REALLY LOVED THE CODING.



THE FINAL CHALLENGE WAS TO CODE THE CAR TO WAIT TO PICK UP LEGO PEOPLE WHO HAD FALLEN INTO WATER.



Inspire student to think creatively, collaborate, and solve problem.



Thursday 23rd October –Monster Mash Dress up Day (no charge)
Come to school dressed in your spookiest, scariest outfits for our annual Monster Mash day.

BLACK HISTORY MONTH

**Wednesday
15th October 2025**

Main
Crispy Baked Chicken
Or
Southern Baked Mac & Cheese

Sides
Cornbread Muffins
Or
Jollof Rice

Dessert
Carnival Coconut & Oat Cookies

DINE

We have a special Menu on 15th October as part of our of Black History Month celebrations.

School dinners cost £2.55 per day payable through Arbor app

	<u>PE Days</u>
Class 1 & 2	Friday
Class 3	Wednesday -swimming
Y4	Tuesday
Class 6	Tuesday - Swimming
Y5	Monday
Class 10	Friday
Class 11 & 12	Thursday



All children need to come to school wearing their **PE kit** on their PE days.
Plain white T-shirt, plain black joggers/ leggings/shorts and trainers.

Important Attendance Info
All registers are reviewed weekly. Emails are then sent out informing parents /carers of concerns over poor or falling attendance. **90% attendance or below is classed as being a persistent absentee (PA) & absences will only be authorised with medical evidence.** Please make sure you report all absence as unreported absences can not be authorised - call on 01922 721092, text or sent in app message. Any pics of any medical evidence can be sent to support@palfrey-j.walsall.sch.uk **Medical evidence will be required if your child has had multiple days off over different weeks.** Thank you

1st-24th October -Black History Month
Friday 10th October -World Mental Health and Happiness Day
Monday 20th & 21st October -Year 3 Stone Age Workshop
Thursday 23rd October- Monster Mash Dress Up Day (no charge)& Break up for Half Term
Friday 24th October -Target Day
27th - 31st October -Half Term Holiday

Dates for the Diary



<u>Year</u>	<u>Start Time</u>	<u>Finish Time</u>
Y 3 & Y 4	8:40am	3:10pm
Y5 & Y6	8:30am	3:00pm



Please make sure your child is arriving to school on time everyday.

Expected attendance is 96 %

The Class with the best attendance was

Class 6,9 & 10 with 98%

Overall our attendance was

96.02%

The attendance for each Class:

Class 1 – 94%

Class 2 – 96%

Class 3 – 95%

Class 4 – 96%

Class 5 – 97%

Class 6 – 98%

Class 7 - 97%

Class 8 - 91%

Class 9 - 98%

Class 10 - 98%

Class 11 - 93%

Class 12 – 96%

Attendance celebration assemblies will be the last week of every term.

Certificates for 95% and 96% attendance, and certificates and prizes for 97+%. Our special Attendance Raffle for £50 Smyths voucher takes place at the end of the school year in July.



Community Corner



funded through



Walsall Council



	Morning	Afternoon
Monday	Advice & Support – 10:00am – 12:00pm Women's Health and Well-being – 10:00am - 12:00pm (£1.00 per session)	Advice & Support – 12:30pm – 2:00pm
Tuesday	Advice & Support – 10:00am – 12:00pm Sewing – 10:00am – 12:00pm (£1.00 per session)	Advice & Support – 12:30pm – 2:00pm
Wednesday	Advice & Support – 10:00am – 12:00pm Palfrey Park Cycling Session – 10:00am - 12:00pm	Advice & Support – 12:30pm – 2:00pm
Thursday	Advice & Support – 10:00am – 12:00pm	Advice & Support – 12:30pm – 2:00pm Employability Search – 12:30pm - 2:30pm
Friday	Ladies Bingo – 10am-11am Women's Well-being Clinic – 10.00am-12.00pm Strength and Balance Class – 11.00am-12.00pm (£1.50 per session)	Women's Well-being Clinic – 12:00pm-3:00pm

Contact us on 01922 644006 or 07799143805 or support@aainahub.com

www.aainahub.com

Facebook: @aainahub.com

***FREE EVENT**

Walsall College Jobs Fair Event

At Pleck Library

Visit our Pleck Library Campus and take part in our *free jobs fair event on 21st October from 11am - 1pm

Come down and speak to local employers and providers to find out what opportunities they have available for you

Our Pleck Library Campus is located at:

Pleck Library Campus,
Darlaston Road,
Walsall, WS2 9RE

*Free for anyone aged 19+, living in the West Midlands area and with household income below £33,000 per year

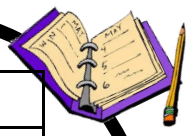
Tel: 01922 657000

Email:
CommunityDevelopment@walsallcollege.ac.uk





Dates for the Diary



Friday 12th September	Roald Dahl Day -children to dress up as favourite character
18th September	UK Day
Friday 19th September	Trade a Tin - non uniform Day for Black Country Food Bank
Wednesday 24th September	Macmillan Coffee Morning Parents/community
Thursday 25th September	Macmillan Fundraising Day (non-uniform, popcorn & cake for £2)
Monday 29th September	British Values Day
Monday 29th September	Nurses in school for Flu vaccinations
Wednesday 1st October	Year 5 STEM Robotics Workshops
Thursday 2nd October	Poetry Day
1st-24th October	Black History Month
Friday 10th October	World Mental Health and Happiness Day
Monday 20th & 21st October	Year 3 Stone Age Workshop
Thursday 23rd October	Monster Mash Dress Up Day (no charge)& Break up for Half Term
Friday 24th October	Target Day
27th - 31st October	Half Term Holiday
Monday 3rd November	Back to school & M&M Theatre Show Robin Hood
Monday 10th November	Year TOGO NOGO Pedestrian Safety Training
Tuesday 11th November	Remembrance Day
Wednesday 12th November	Year 4 -Tamworth Castle Trip
12th & 13th November	Year 6 Bikability
Friday 14th November	Children In Need– non uniform day and pop corn for £2
17th-21st November	Anti- Bullying Week
Wednesday 19th November	Whole School SEND WOW Day
Wednesday 26th November	Year 4 Inspire Workshop—Norman Shields 1:40-2:45pm
Friday 28th November	Artist Day
Tuesday 2nd December	Year 3 Inspire Workshop –Victorians
Thursday 4th December	Winter Fayre
Monday 8th December	Year 5 Inspire Workshop - CSI 1:40-2:45pm
Thursday 11th December	Christmas Jumper Day £1
Monday 15th December	Christmas Around the World Day
Tuesday 16th December	School Choir Christmas Concert
Wednesday 17th December	Christmas Lunch
Thursday 18th December	Toy Day & Break up for Christmas Holiday
Friday 19th December	School Closed Staff Training Day
Monday 5th January	Back to School



BLACK HISTORY MONTH



Dates may change and more events and extra details will be added to the newsletter throughout the year.



Black Country Women's Aid
we listen, we support, we care



CRIME STOPPERS
0800 555 111
Call anonymously with information about crime

Useful numbers

If you need help, support, advice or are concerned or worried these services can help.

CRIME STOPPERS –0800 555 111 or 101 or in emergencies 999

Black County Women's Aid– 0121 553 0090 (Domestic Abuse Support)

SAYA multilingual Phone line - 0800 389 6990 (Domestic Abuse Support)

Early Help Hub- 0300 555 2866 (option 1)

CGL (old Sure Start, South Street) 01922 6423382



Family Information Services- 01922 653383

Citizens Advice Bureau -0300 3301159

www.walsallcab.org.uk



NSPCC - 0808 800 5000

CHILDLINE -0800 1111



Bereavement Services - Child & Family Helpline: 01922 645035 www.wbss.org.uk



The Samaritans– 116 123

**BLACK COUNTRY
FOODBANK**
LOVE . CONNECT . INVEST



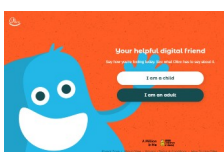
If you are finding it difficult to feed you family during these difficult time we are now partnered with Black Country Food Bank and can issue Food Vouchers that can be re-deem locally. Please call us or email support@palfrey-j.walsall.sch.uk and we will get back to you. This is strictly confidential.

If you need additional support or guidance ,you can also contact the Early Help Hub on 01922 6423382, Family Information Services 01922 653383 or Walsall Council on 0300 555 2855 or

[Cost of living support website](#)



[The Hub of Hope](#) is the UK's leading mental health support database. It brings local, national, peer, community, charity, private and NHS mental health support and services together in one place. Simply type your post code into the search bar, then select the area of support you need and it will show you information and contact details of all the local organisations and support available for you to access.



[Ollee](#) is a virtual friend aimed at 8-11 year-olds and their parents, Ollee is a browser-based app that helps children and families explore feelings and emotions, and gives advice to help resolve issues. You can [try it here](#)