



Palfrey Junior School Newsletter

Dale Street ,Palfrey, Walsall, WS1 4AH Telephone:- 01922 721092

www.palfrey-j.walsall.sch.uk

Friday 13th February 2026 Issue 16

Golden Certificates

Well done to the following children who have been awarded a Golden Certificate this week for fantastic work, behaviour and attitude to learning:

- Cl 4 Maryam B
- Cl 5 Jannat A
- Cl 5 Ummayzah C
- Cl 7 Saffa A
- Cl 7 Ihan A
- Cl 9 Mazin A
- Cl 10 Haris K
- Cl 10 Fatima F

- Cl 4 Haaris M
- Cl 7 Amir A
- Cl 9 Ubaidullah S
- Cl 10 Sarah M

- Cl 5 Safiyah S
- Cl 7 Bilal R
- Cl 10 Matilda G-T

This Week In School

Year 3 - have been learning multiplication skills to multiply by 4 and 8 by doubling, they have completed a character comparison from the Stone Age boy in literacy and in topic, they have been learning all about Ancient Greek gods.



Year 4 - have been writing poems for National Storytelling Week in literacy, they have been learning how to use AI safely and responsibly for Internet safety Day and in science, they have been making models of the human digestive system.

Year 5 - have been adding and subtracting 4 digit numbers or finding prime numbers, square numbers and factors in maths, they have found out all about scientist Mary Anning and created fact files and in outdoor learning, they have made some bug hotels.



Year 6 - have been revising multiplication and division strategies in maths, they have been using shading and depth to draw a 'Black Hole' in science/art and in topic they have used the character they have designed to plan their own Viking Saga.

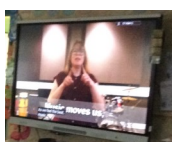
Harmony—The Big Sing

Walsall Council Public Health and the Music Education Service joined forces to deliver Harmony in Walsall. Harmony is a creative health project, which supports children's mental health and wellbeing through music and connection. Across the Black Country, 40,000 pupils across 120 schools took part in Harmony and the Big Sing. Children and teachers have been learning four songs linked to themes about connecting, happiness and friendship and watched a live-stream video on Thursday



Everyone worked really hard learning all the songs and sign language. We had lots of fun taking part and everyone sounded great! Miss Holland

12 February bringing together images from their schools, children from other schools and taking them through a mass singing event with activities and information about the 8 Steps to Wellbeing. It was a fantastic event and the children loved it.



UNISATs

On Wednesday 11th February 26, a group of children from year 6 took part in a special Uni Sats event at Wolverhampton University.



In the Uni Sats we did a range of different activities such as sports, lego, learning about germs and types of bacteria that can spread around places. We also did a treasure hunt around the Wolverhampton University campus. It was lots of fun and we really enjoyed it.





Thursday 5th March 2026 - World Book Day

Our theme for World Book Day this year is Paddington Bear. Children can come to school in their favourite coat and hat just like Paddington or they can come in any non uniform outfit they choose, this can also include favourite book/ comic characters like superhero's and princesses.

If you would like to come as Paddington there is a mask template on p4



Year	Start Time	Finish Time
Y 3 & Y 4	8:40am	3:10pm
Y5 & Y6	8:30am	3:00pm



Please make sure your child is arriving to school on time everyday.

Expected attendance is 96 %

The Class with the best attendance was

Class 2 with 99%

Overall our attendance was

95.22%

The attendance for each Class:

Class 1 – 96%

Class 2 – 99%

Class 3 – 98%

Class 4 – 94%

Class 5 – 98%

Class 6 – 93%

Class 7 - 93%

Class 8 - 93%

Class 9 - 94%

Class 10 - 93%

Class 11 - 96%

Class 12 – 95%



Inspire Workshops

Throughout the year we like to invite parents/carers to come into school to take part in some fun & creative activities with your children. Workshops are between 1:40 and 2:45pm and due to space only 1 adult per child allowed. Thank you

Wed 4th March - Y4 The Water Cycle



Thurs 12th March - Mother's Day Afternoon

Mon 23rd March - Y5 –Teepee making

All children need to come to school wearing their **PE kit** on their PE days.

Plain white T-shirt, plain black joggers/ leggings/shorts and trainers.



	PE Days
Class 1 & 3	Wednesday
Class 2	Wednesday swimming
Class 4	Tuesday-Swimming
Class 5 & 6	Tuesday
Y5	Friday—Joy of Movement
Class 10	Monday
Class 11 & 12	Thursday

Dates for the Diary

Monday 23rd February -Back to school—On time please!

Wednesday 4th March - Y4 Inspire workshop—the water cycle

Thursday 5th March- Our World/ Culture Day - Non uniform day

Monday 9th March - Y4 Bike fix

Thursday 12th March - Y4 STEM workshop @Wolverhampton University

Thursday 12th March -Y3 Pedestrian Safety Training



Important Attendance Info

All registers are reviewed weekly. Emails are then sent out informing parents /carers of concerns over poor or falling attendance. **90% attendance or below is classed as being a persistent absentee (PA) & absences will only be authorised with medical evidence.** Please make sure you report all absence as unreported absences can not be authorised - call on 01922 721092, text or sent in app message. Any pics of any medical evidence can be sent to support@palfrey-j.walsall.sch.uk **Medical evidence will be required if your child has had multiple days off over different weeks.** Thank you

The Adventures of Paddington™



Make your own Paddington Mask!



Use scissors
carefully

ask a grown-up for
help if you need to!

You will need:

- Colouring pens, pencils or crayons
- Glue or sticky tape
- Thin card (e.g. an old cereal box)
- Scissors
- Elastic or string



In partnership with

WORLD
BOOK
DAY



A World Book Day® £1/€1.50 book

Instructions

- 1 Colour and decorate your Paddington mask and cut it out following the dotted lines.
- 2 Stick it onto thin card to make it stronger. Cut out the eye holes.
- 3 With the help of an adult, pierce a hole in the two places marked x.
- 4 Thread a piece of elastic or string through the two holes and tie in place.
- 5 Put on your Paddington mask!



HC
CB

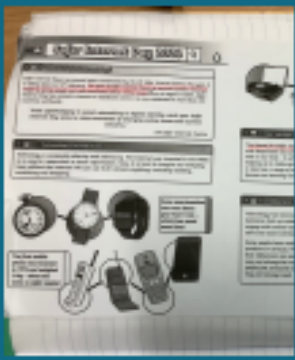
HARPERCOLLINS
CHILDREN'S BOOKS

www.harpercollins.co.uk

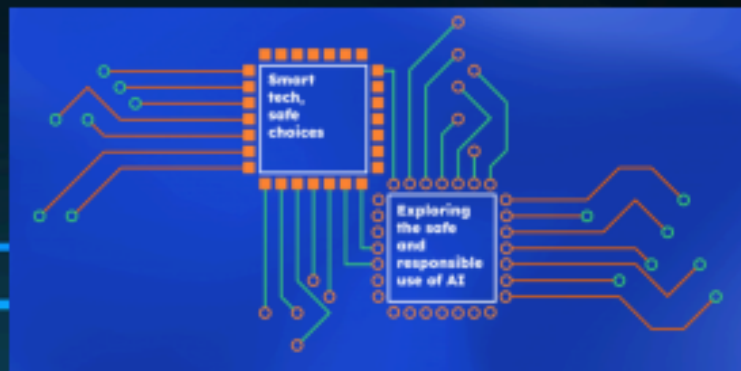
No printer,
no problem!
Check out our
no-print
instructions on
the next page!

SAFER INTERNET DAY 2026

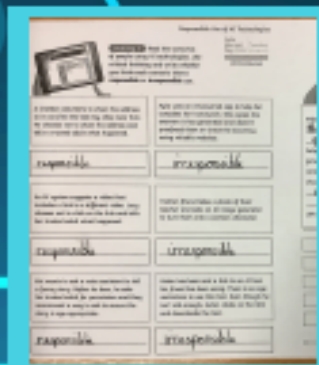
Class 9



Reading up on this year's theme!



Joining in the BBC Live lesson



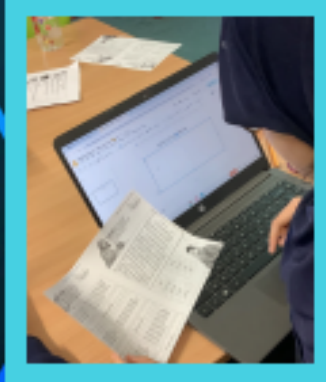
Recognising safe use of AI



Attending an assembly led by the Digital Leaders



Creating a presentation of how to use AI safely





ARE YOU STRUGGLING TO PAY YOUR BILLS?
NEED SOMEONE TO HELP YOU MAKE SENSE OF IT?
NEED SOME ENERGY SAVING ADVICE?
Book an appointment with our ECAO today!!
01922 644006
Note that Aaina Community Hub is a women's centre, and its services are primarily for women, including this one. Thank you for your understanding.

	Morning	Afternoon
Monday	Advice & Support - 10:00am - 12:00pm Women's Health and Well-being - 10:00am - 12:00pm (£1.00 per session)	Advice & Support - 12:30pm - 2:00pm
Tuesday	Advice & Support - 10:00am - 12:00pm Sewing - 10:00am - 12:00pm (£1.00 per session)	Advice & Support - 12:30pm - 2:00pm
Wednesday	Advice & Support - 10:00am - 12:00pm Palfrey Park Cycling Session - 10:00am - 12:00pm	Advice & Support - 12:30pm - 2:00pm
Thursday	Advice & Support - 10:00am - 12:00pm	Advice & Support - 12:30pm - 2:00pm Employability Search - 12:30pm - 2:30pm
Friday	Ladies Bingo - 10am-11am Women's Well-being Clinic - 10.00am-12.00pm Strength and Balance Class - 11.00am-12.00pm (£1.50 per session)	Women's Well-being Clinic - 12:00pm-3:00pm



funded through



Walsall Council




UK Government NHS
For parents' questions, BIG & small.
Why is my baby crying?
What should I pack in my hospital bag?
How do I apply for childcare support?
Get advice and support at BestStartInLife.gov.uk
BEST START IN LIFE

If you have babies or toddlers at home or are expecting a new baby there is a new government website called

which offers lots of support and advice.
[Click on this link to take you to the Best Start In Life website](http://BestStartInLife.gov.uk)

NASHDOM - 01922 616444

Free Advice & Support



Monday - Friday
9:30 am - 5:00 pm

- Financial & Housing Support
- Homelessness
- Safe Spaces
- Energy advice and support (WEAP)
- Multilingual assistance: Romanian, Slovakian, Polish, Russian, Ukrainian, Latvian Lithuanian, Bulgarian, Urdu, Panjabi, Gujarati



Walsall Family Hubs
Supporting families to live happier lives.

DADS GROUPS

We know Dads play a vital role in their children's lives.

We have lots on offer for you at Walsall Family Hubs;

- Dads Stay and plays (weekdays and weekends)
- Dads 4 Dads Peer Support Groups
- One to One support
- Parenting Workshops - Henry
- DadsPad App

and much more

No booking, just turn up

For more information contact Ed
07584 521955 or email
EarlyHelpParentingTeam@walsall.gov.uk

www.walsallfamilyhubs.co.uk

“Stay and play gave me confidence to be myself without fear of feeling judged”
Quote from a Dad

SCAN HERE TO TAKE A LOOK AT OUR FREE AND EXCITING ACTIVITIES.



Making Connections Walsall

Get Connected, Stay Connected



Making Connections Walsall is a friendly service for residents of all ages in Walsall that aims to address loneliness, social isolation and to empower residents to take responsibility for their own health and well-being

0121 380 6690

Walsall Council



*FREE COMMUNITY COURSES AVAILABLE AT WALSALL COLLEGE

Including Photography & Videography, Healthy Lifestyles, Introduction to Digital Marketing and Introduction to Fashion & Textiles

Contact 01922 657000 or CommunityDevelopment@walsallcollege.ac.uk to register your interest

*subject to eligibility



Your place to grow
Your place to shine

Dates for the Diary



Monday 19th January	Y6 Inspire Workshop Class 12
Wednesday 21st January	Y6 Inspire Workshop Class 11
Thursday 22nd January	Y6 Inspire Workshop Class 10
Thursday 22nd January	TT Rockstars Battle of the Bands — postponed —
Thursday 29th January	TT Rockstars Battle of the Bands (dress like a rock star)
26th -30th January	Book Fair Week
Tuesday 27th January	Y3 Inspire Workshop - Greek Vases
2nd - 6th February	National Story Telling Week & Well Being Week
Friday 6th February	Y5 Joy of Movement
Tuesday 10th February	Internet Safety Day
Wednesday 11th February	International Women and Girls in Science Day
Thursday 12th February	The Big Harmony Sing
Friday 13th February	Break up for Half term
Monday 23rd February	Back to school—On time please!
Wednesday 25th February	Y4 Inspire workshop — postponed
Wednesday 4th March	Y4 Inspire workshop—the water cycle NEW DATE
Wednesday 4th & Thursday 5th March	Y3 – Learn to ride
Thursday 5th March	Our World/ Culture Day - Non uniform day
Monday 9th March	Y4 Bike fix
Thursday 12th March	Y4 STEM workshop @Wolverhampton University
Thursday 12th March	Y3 Pedestrian Safety Training
Thursday 12th March	Mother’s Day Celebration Afternoon 1:40 - 2:45pm
Friday 13th March	Y3 Pedestrian Safety Training
23rd - 27th March	Well Being Week
Monday 23rd March	Y5 Inspire Workshop - Tee pee Making
Tuesday 24th March	Y4 Fire Safety Talks
Wednesday 25th March	Y4 Inspire Workshop - The Water Cycle
Friday 27th March	Break up for Easter Holidays
Monday 13th April	Back to school- on time please!
27th April –1st May	Well Being Week
Tuesday 28th April	Year 3 Inspire Workshop - Volcanoes
Monday 4th May	School Closed - May Bank Holiday
11th - 14th May	Year 6 SATs week
18th - 22nd May	Science Week



Dates may change and more events and extra details will be added to the newsletter throughout the



Useful numbers

If you need help, support, advice or are concerned or worried these services can help.

CRIME STOPPERS –0800 555 111 or 101 or in emergencies 999

Black County Women’s Aid– 0121 553 0090 (Domestic Abuse Support)

SAYA multilingual Phone line - 0800 389 6990 (Domestic Abuse Support)

Early Help Hub- 0300 555 2866 (option 1)

CGL (old Sure Start, South Street) 01922 6423382



Family Information Services- 01922 653383

Citizens Advice Bureau -0300 3301159

www.walsallcab.org.uk



NSPCC - 0808 800 5000

CHILDLINE -0800 1111



Bereavement Services - Child & Family Helpline: 01922 645035 www.wbss.org.uk



The Samaritans– 116 123



If you are finding it difficult to feed you family during these difficult time we are now partnered with Black Country Food Bank and can issue Food Vouchers that can be re-deem locally. Please call us or email support@palfrey-j.walsall.sch.uk and we will get back to you. This is strictly confidential.

If you need additional support or guidance ,you can also contact the Early Help Hub on 01922 6423382, Family Information Services 01922 653383 or Walsall Council on 0300 555 2855 or

[Cost of living support website](#)



[The Hub of Hope](#) is the UK’s leading mental health support database. It brings local, national, peer, community, charity, private and NHS mental health support and services together in one place. Simply type your post code into the search bar, then select the area of support you need and it will show you information and contact details of all the local organisations and support available for you to access.



[Ollee](#) is a virtual friend aimed at 8-11 year-olds and their parents, Ollee is a browser-based app that helps children and families explore feelings and emotions, and gives advice to help resolve issues. You can [try it here](#)