



Palfrey Junior School Newsletter

Dale Street ,Palfrey, Walsall, WS1 4AH Telephone:- 01922 721092

www.palfrey-j.walsall.sch.uk

Friday 23rd January 2026 Issue 14

Golden Certificates

Well done to the following children who have been awarded a Golden Certificate this week for fantastic work , behaviour and attitude to learning:



Cl 1Haniya A
 Cl 1 Samuel K
 Cl 4 Ruhan W
 Cl 4 Hamza P
 Cl 5 Eiliyah S
 Cl 5 Sarkan Q
 Cl 5 Daisy W
 Cl 7 Zahara B
 All of Class 10
 Cl 11 Tazkiya A
 Cl 12 Ibrahim K



Cl 4 Rumaysa
 Cl 5 Haider H
 Cl 7 Laiba A
 Cl 10 Sahil H
 Cl 12 Sofiya K



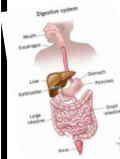
Cl 4 Aisha K
 Cl 7 Sumaiya A
 Cl 10 Hamna K
 Cl 12 Shaista A

This Week In School

Year 3 - have practised using remainders when dividing in maths, they have been learning how to use co-ordinating conjunctions to join independent clauses in literacy and topic, they have created a timeline to show important events in Ancient Greece.



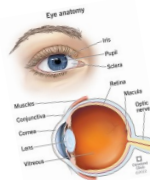
Year 4 - have been exploring the feelings of different characters in their story so they can write a diary entry in literacy, they have been learning about the functions of different parts of the digestive system in science and in art, they have been researching important people to help them produce a portrait on canvas.



Year 5 - have been learning how to convert fractions into decimals in maths, they have started their new reading book 'Friend or Foe' in literacy and they had a fantastic time in outdoor learning. They built dams to learn how to preserve water and explored how birds use different material to build their nests.



Year 6 - have been investigating how many nets of a cube there are in maths, they have read chapter 1 of the Michael Morpurgo book, 'Kensuke's Kingdom' in literacy and in science, they have researched how the eye works.



Great activity!!! Both I and Aisha enjoyed the afternoon event.



Viking Longboat Inspire workshop

It was a wonderful afternoon, thank you for inviting parents. I enjoyed it very much.



Year 6 Outdoor Learning

In outdoor learning we got some apples and poked little holes in them. We then put some bird seeds in the holes. We tied a knot and hung it on a tree. I really enjoyed it.
Fatema

We made a bird feeder with an apple, sticks and seeds. After that, we made a nest out of natural materials. It was lots of fun and I liked it. Haris



If you would like to make your own apple bird feeder instructions are on p5



Thursday 29th January 2026

Don't forget to dress like a rock star for TT Rock Stars Battle of the Bands Day, and get logging in to TT RS to practise those time tables!!

To make the day really fun we ask the children to come to school dressed as cool rock stars e.g. jeans, t-shirts, spikey hair, sunglasses, caps, bandanas etc...



Come to the Book Fair

We are pleased to say that we will be having the Scholastic Book Fair again in school this year. Information posters on page 3 & 4.

Book Fair will be in school

Monday 26th -30th January and open to parents/ carers 2:45pm - 3:30pm in the Hub Hall



Inspire Workshops

Throughout the year we like to invite parents/carers to come into school to take part in some fun & creative activities with your children. Workshops are between 1:40 and 2:45pm and due to space only 1 adult per child allowed. Thank you

Tues 27th January - Y3 Greek Vases



Wed 4th March - Y4 The Water Cycle

Thurs 12th March - Mother's Day Afternoon



Mon 23rd March - Y5 -Teepee making



	PE Days
Class 1	Friday
Class 3	Wednesday -swimming
Y4	Tuesday-Swimming
Class 6	Tuesday
Y5	Monday
Class 10	Friday
Class 11 & 12	Thursday

All children need to come to school wearing their **PE kit** on their PE days.
Plain white T-shirt, plain black joggers/ leggings/shorts and trainers.

Year	Start Time	Finish Time
Y 3 & Y 4	8:40am	3:10pm
Y5 & Y6	8:30am	3:00pm



Please make sure your child is arriving to school on time everyday.

Expected attendance is 96 %

The Class with the best attendance was

Class 7 & 9 with 99%

Overall our attendance was

96.23%

The attendance for each Class:

Class 1 – 95%

Class 2 – 95%

Class 3 – 94%

Class 4 – 97%

Class 5 – 95%

Class 6 – 98%

Class 7 - 99%

Class 8 - 93%

Class 9 - 99%

Class 10 - 96%

Class 11 - 92%

Class 12 – 97%



Important Attendance Info

All registers are reviewed weekly. Emails are then sent out informing parents /carers of concerns over poor or falling attendance. **90% attendance or below is classed as being a persistent absentee (PA) & absences will only be authorised with medical evidence.** Please make sure you report all absence as unreported absences can not be authorised - call on 01922 721092, text or sent in app message. Any pics of any medical evidence can be sent to support@palfrey-j.walsall.sch.uk **Medical evidence will be required if your child has had multiple days off over different weeks.** Thank you

Dates for the Diary

26th -30th January- Book Fair Week

Tuesday 27th January -Y3 Inspire Workshop - Greek Vases

Thursday 29th January—TT Rock Stars Battle of the Bands Day (dress up as a rock star)

2nd - 6th February - National Story Telling Week & Well Being Week

Tuesday 10th February- Internet Safety Day

Wednesday 11th February -International Women and Girls in Science Day

Thursday 12th February -The Big Harmony Sing

Friday 13th February -Break up for Half term

Monday 23rd February -Back to school—On time please!



Our Walsall Day

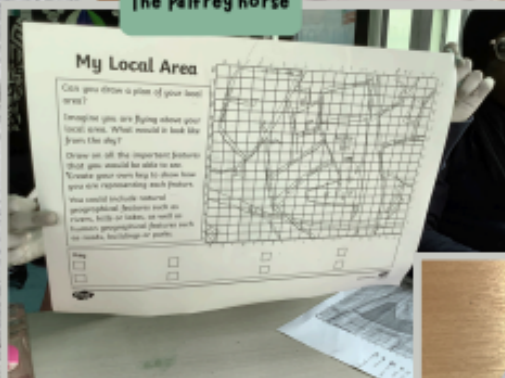
On Friday 16th January, the whole school took part in a special 'wow day' to learn all about the town we live in. Children looked at lots of different maps and pictures and researched how Walsall has changed. They produced some fantastic art work, fact files, maps and posters.

Our Walsall

We explored the history of Walsall and researched how it has changed over time. We then drew an aerial view of Palfrey and created artwork for a class "museum," comparing Walsall in the past with Walsall today.



The Palfrey horse



Class 9

SCHOLASTIC TRAVELLING BOOKS

Every book you buy earns **FREE BOOKS** for our school*

COME TO OUR BOOK FAIR

AND FIND YOUR NEXT FAVOURITE READ!



DATE: 26th -30th January

TIME: 2:45pm - 3:30pm

LOCATION: The Hub Hall



Discover books from **£2.99**

MORE NEW BOOKS YOU'LL LOVE!



Includes 4 free mini figures!

DISCOVER MORE BOOKS ONLINE!

www.bookfairs.scholastic.co.uk/bookcases



Payment at our Book Fair

- Please check with your school for the best way to pay for your books
- You may pay by card at the fair via card reader machines if your school has one or by using the online payment link at: www.bookfairs.scholastic.co.uk/pay and simply selecting your school from the drop down menu.
- Pre-paid gift vouchers are available in £5, £10, £15, £20 and £25. Go to www.bookfairs.scholastic.co.uk/gift-vouchers to buy vouchers for your child before the fair.
- If you can't attend the fair in person, your child can order books via a Wish List - please ask your school for details.

HELP EARN FREE BOOKS

Scholastic is one of the largest providers of free books to schools via our Reward scheme which helps to ensure that as many children as possible have access to books that support reading for pleasure. Every time you buy from the Book Fair, you help to make a difference by supporting literacy in your child's setting. Last year, with your help, we gave over £5,334 worth of free books to schools nationwide, which stocked school libraries and classrooms.



*Free books are subject to terms and conditions. Please contact your Book Fair Organizer or Scholastic Book Fairs for details. All books subject to availability. Book ranges may vary. ⚠ Warning: Not suitable for children under 3. Small parts.

Children will also have the opportunity to look at the books and buy books during the school day.

How to make an apple bird feeder

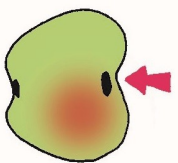
wildlife
watch



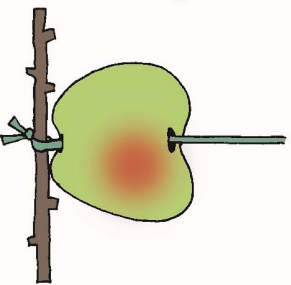
You will need

- An apple
- An apple corer or skewer
- Sunflower seeds
- String
- A thin stick

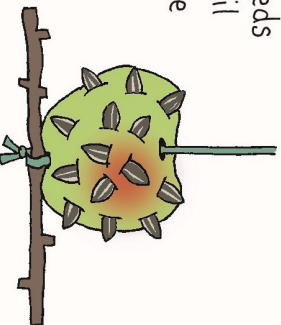
1 Ask an adult to make a hole through the middle of the apple.



2 Thread some string through the hole in the apple and tie the bottom end to the stick.



3 Push sunflower seeds into the apple until it looks like a little hedgehog.



4 Tie the string to a tree branch and wait for the birds!



Community Corner

Contact Aaina Hub on 01922 644006 or 07799143805 support@aainahub.com

www.aainahub.com

	Morning	Afternoon
Monday	Advice & Support - 10:00am - 12:00pm Women's Health and Well-being - 10:00am - 12:00pm (£1.00 per session)	Advice & Support - 12:30pm - 2:00pm
Tuesday	Advice & Support - 10:00am - 12:00pm Sewing - 10:00am - 12:00pm (£1.00 per session)	Advice & Support - 12:30pm - 2:00pm
Wednesday	Advice & Support - 10:00am - 12:00pm Palfrey Park Cycling Session - 10:00am - 12:00pm	Advice & Support - 12:30pm - 2:00pm
Thursday	Advice & Support - 10:00am - 12:00pm	Advice & Support - 12:30pm - 2:00pm Employability Search - 12:30pm - 2:30pm
Friday	Ladies Bingo - 10am-11am Women's Well-being Clinic - 10.00am-12.00pm Strength and Balance Class - 11.00am-12.00pm (£1.50 per session)	Women's Well-being Clinic - 12:00pm-3:00pm



funded through



Walsall Council



ARE YOU STRUGGLING TO PAY YOUR BILLS?

NEED SOMEONE TO HELP YOU MAKE SENSE OF IT?
NEED SOME ENERGY SAVING ADVICE?

Book an appointment with our ECAO today!!

01922 644006

Note that Aaina Community Hub is a women's centre, and its services are primarily for women, including this one. Thank you for your understanding.

Free Advice & Support

Monday - Friday
9:30 am - 5:00 pm

- Financial & Housing Support
- Homelessness
- Safe Spaces
- Energy advice and support (WEAP)
- Multilingual assistance: Romanian, Slovakian, Polish, Russian, Ukrainian, Latvian Lithuanian, Bulgarian, Urdu, Panjabi, Gujarati

NASHDOM - 01922 616444

nash_domcic | Nash Dom CIC

Contact us to book an appointment
info@nashdomcic.org
01922616444

Nash Dom Community Hub,
Sun St, Walsall
WS1 4AL

Making Connections Walsall

Get Connected, Stay Connected

Making Connections Walsall is a friendly service for residents of all ages in Walsall that aims to address loneliness, social isolation and to empower residents to take responsibility for their own health and well-being

0121 380 6690

Walsall Council | MAKING CONNECTIONS WALSALL

DADS GROUPS

We know Dads play a vital role in their children's lives.

We have lots on offer for you at Walsall Family Hubs;

- Dads Stay and plays (weekdays and weekends)
- Dads 4 Dads Peer Support Groups
- One to One support
- Parenting Workshops - Henry
- DadsPad App
- and much more

No booking, just turn up

For more information contact Ed
07584 521955 or email
EarlyHelpParentingTeam@walsall.gov.uk

Quote from a Dad
"Stay and play gave me confidence to be myself without fear of feeling judged"

SCAN HERE TO TAKE A LOOK AT OUR FREE AND EXCITING ACTIVITIES.

walsallfamiliesintheknow | www.walsallfamilyhubs.co.uk

UK Government

For parents' questions, BIG & small.

Why is my baby crying?
What should I pack in my hospital bag?
How do I apply for childcare support?

Get advice and support at BestStartInLife.gov.uk

BEST START IN LIFE

If you have babies or toddlers at home or are expecting a new baby there is a new government website called Best Start In Life which offers lots of support and advice.

[Click on this link to take you to the Best Start In Life website](http://BestStartInLife.gov.uk)



Dates for the Diary



Monday 19th January	Y6 Inspire Workshop Class 12
Wednesday 21st January	Y6 Inspire Workshop Class 11
Thursday 22nd January	Y6 Inspire Workshop Class 10
Thursday 22nd January	TT Rockstars Battle of the Bands — postponed —
Thursday 29th January	TT Rockstars Battle of the Bands (dress like a rock star)
26th -30th January	Book Fair Week
Tuesday 27th January	Y3 Inspire Workshop - Greek Vases
2nd - 6th February	National Story Telling Week & Well Being Week
Friday 6th February	Y5 Joy of Movement
Tuesday 10th February	Internet Safety Day
Wednesday 11th February	International Women and Girls in Science Day
Thursday 12th February	The Big Harmony Sing
Friday 13th February	Break up for Half term
Monday 23rd February	Back to school—On time please!
Wednesday 25th February	Y4 Inspire workshop — postponed
Wednesday 4th March	Y4 Inspire workshop—the water cycle NEW DATE
Wednesday 4th & Thursday 5th March	Y3 – Learn to ride
Thursday 5th March	Our World/ Culture Day - Non uniform day
Monday 9th March	Y4 Bike fix
Thursday 12th March	Y4 STEM workshop @Wolverhampton University
Thursday 12th March	Y3 Pedestrian Safety Training
Thursday 12th March	Mother’s Day Celebration Afternoon 1:40 - 2:45pm
Friday 13th March	Y3 Pedestrian Safety Training
23rd - 27th March	Well Being Week
Monday 23rd March	Y5 Inspire Workshop - Tee pee Making
Tuesday 24th March	Y4 Fire Safety Talks
Wednesday 25th March	Y4 Inspire Workshop - The Water Cycle
Friday 27th March	Break up for Easter Holidays
Monday 13th April	Back to school- on time please!
27th April –1st May	Well Being Week
Tuesday 28th April	Year 3 Inspire Workshop - Volcanoes
Monday 4th May	School Closed - May Bank Holiday
11th - 14th May	Year 6 SATs week
18th - 22nd May	Science Week



Dates may change and more events and extra details will be added to the newsletter throughout the



Useful numbers

If you need help, support, advice or are concerned or worried these services can help.

CRIME STOPPERS –0800 555 111 or 101 or in emergencies 999

Black County Women’s Aid– 0121 553 0090 (Domestic Abuse Support)

SAYA multilingual Phone line - 0800 389 6990 (Domestic Abuse Support)

Early Help Hub- 0300 555 2866 (option 1)

CGL (old Sure Start, South Street) 01922 6423382



Family Information Services- 01922 653383

Citizens Advice Bureau -0300 3301159

www.walsallcab.org.uk



NSPCC - 0808 800 5000

CHILDLINE -0800 1111



Bereavement Services - Child & Family Helpline: 01922 645035 www.wbss.org.uk



The Samaritans– 116 123



If you are finding it difficult to feed you family during these difficult time we are now partnered with Black Country Food Bank and can issue Food Vouchers that can be re-deem locally. Please call us or email support@palfrey-j.walsall.sch.uk and we will get back to you. This is strictly confidential.

If you need additional support or guidance ,you can also contact the Early Help Hub on 01922 6423382, Family Information Services 01922 653383 or Walsall Council on 0300 555 2855 or

[Cost of living support website](#)



[The Hub of Hope](#) is the UK’s leading mental health support database. It brings local, national, peer, community, charity, private and NHS mental health support and services together in one place. Simply type your post code into the search bar, then select the area of support you need and it will show you information and contact details of all the local organisations and support available for you to access.



[Ollee](#) is a virtual friend aimed at 8-11 year-olds and their parents, Ollee is a browser-based app that helps children and families explore feelings and emotions, and gives advice to help resolve issues. You can [try it here](#)