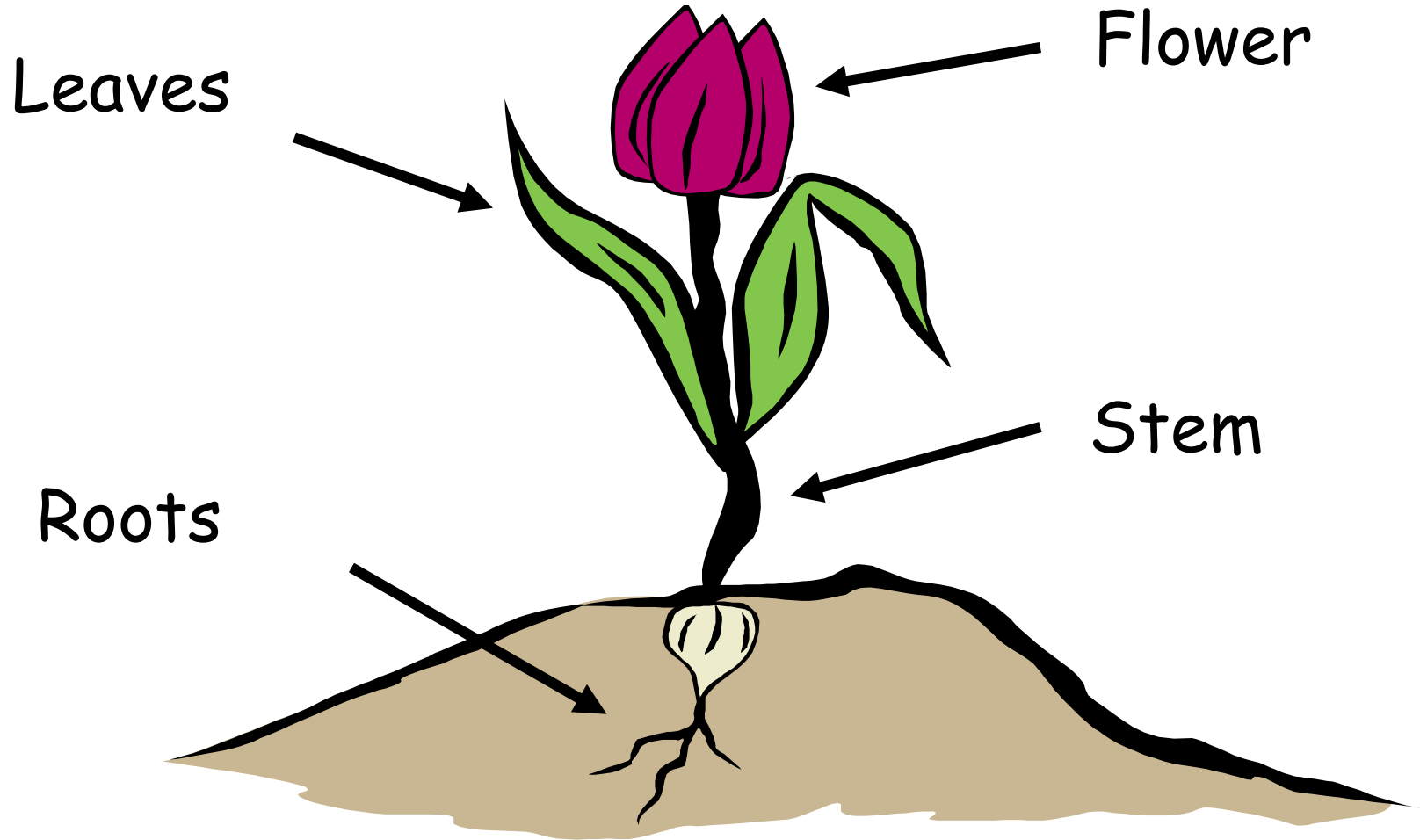


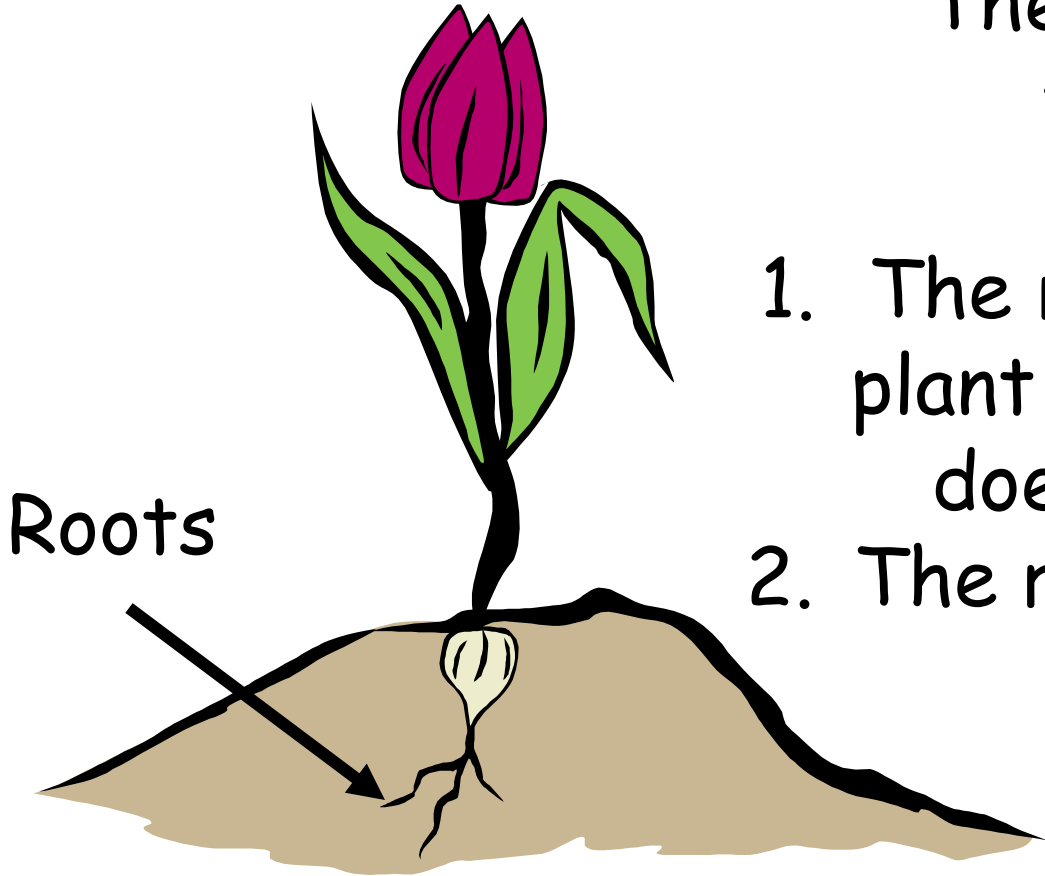
Lets start with some revision...



What is the function of the root?

The root has two functions...

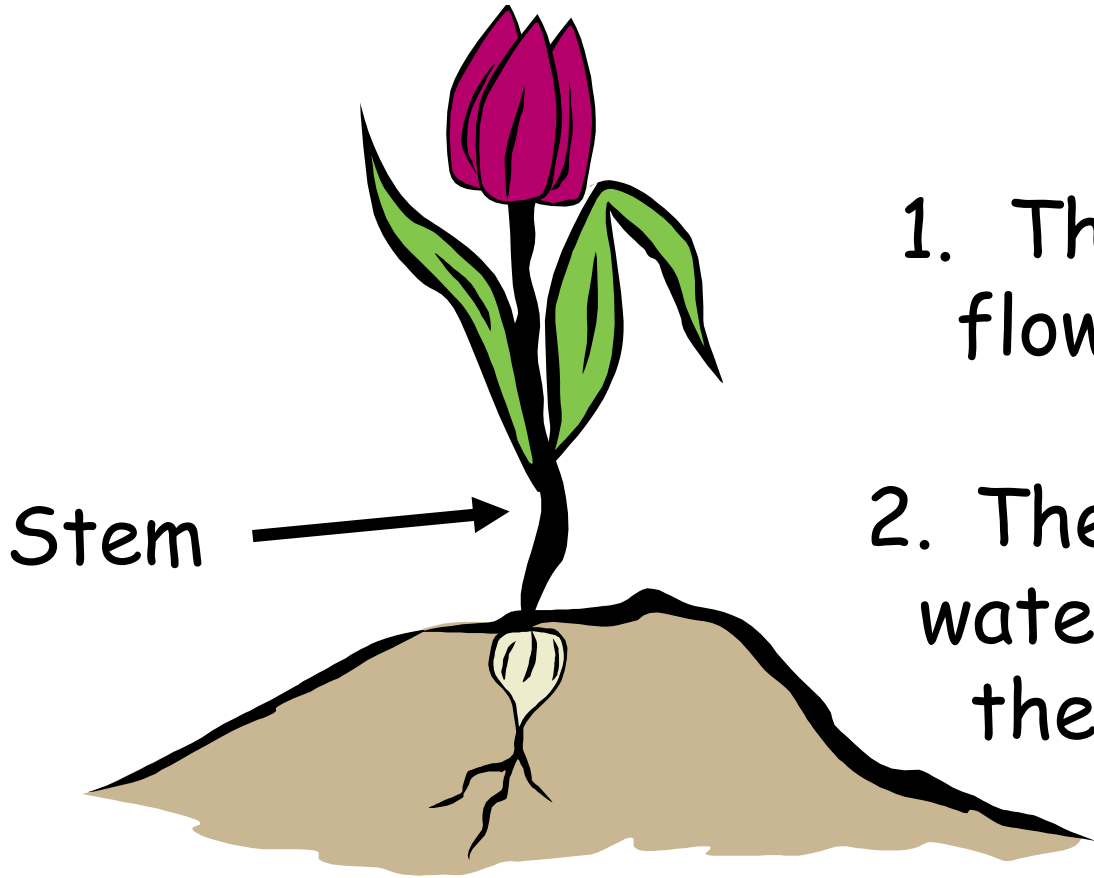
1. The roots stabilise the plant in the ground so it does not blow away.
2. The roots absorb water from the soil.



What is the function of the stem?

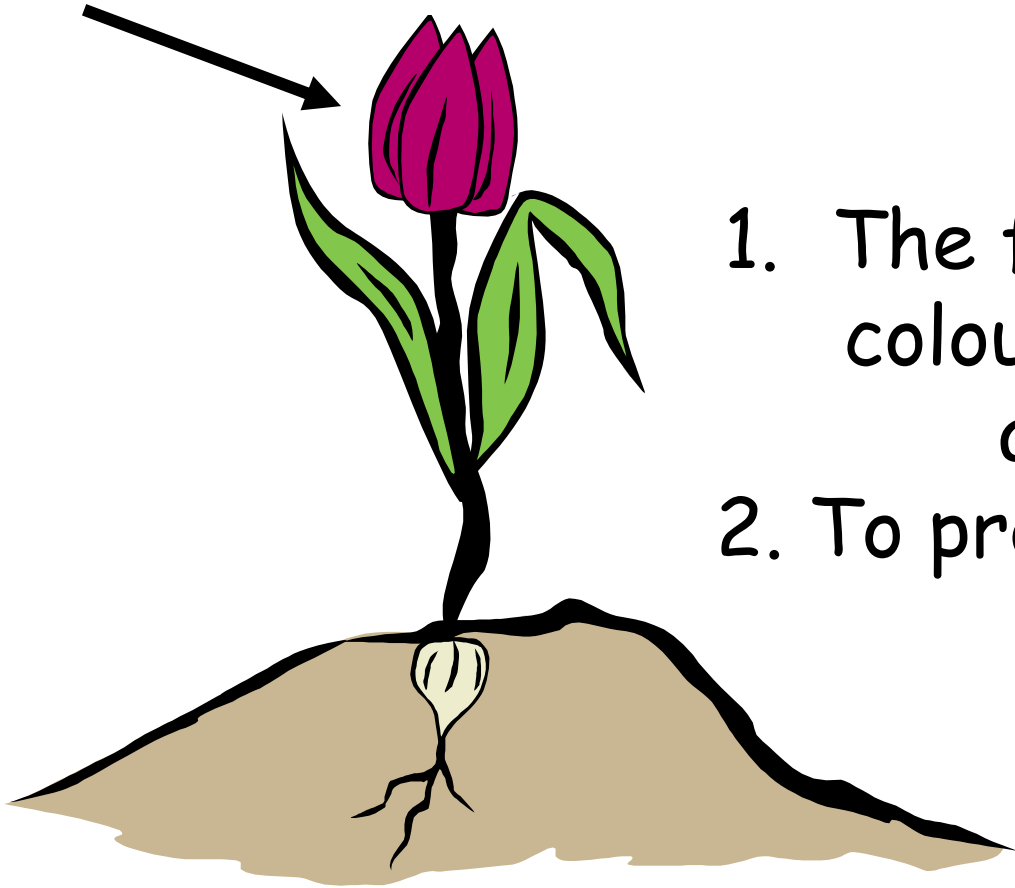
The stem has two functions...

1. The stem holds the flower up towards the sunlight.
2. The stem carries the water from the roots to the rest of the plant.



What is the function of the flower?

Flower

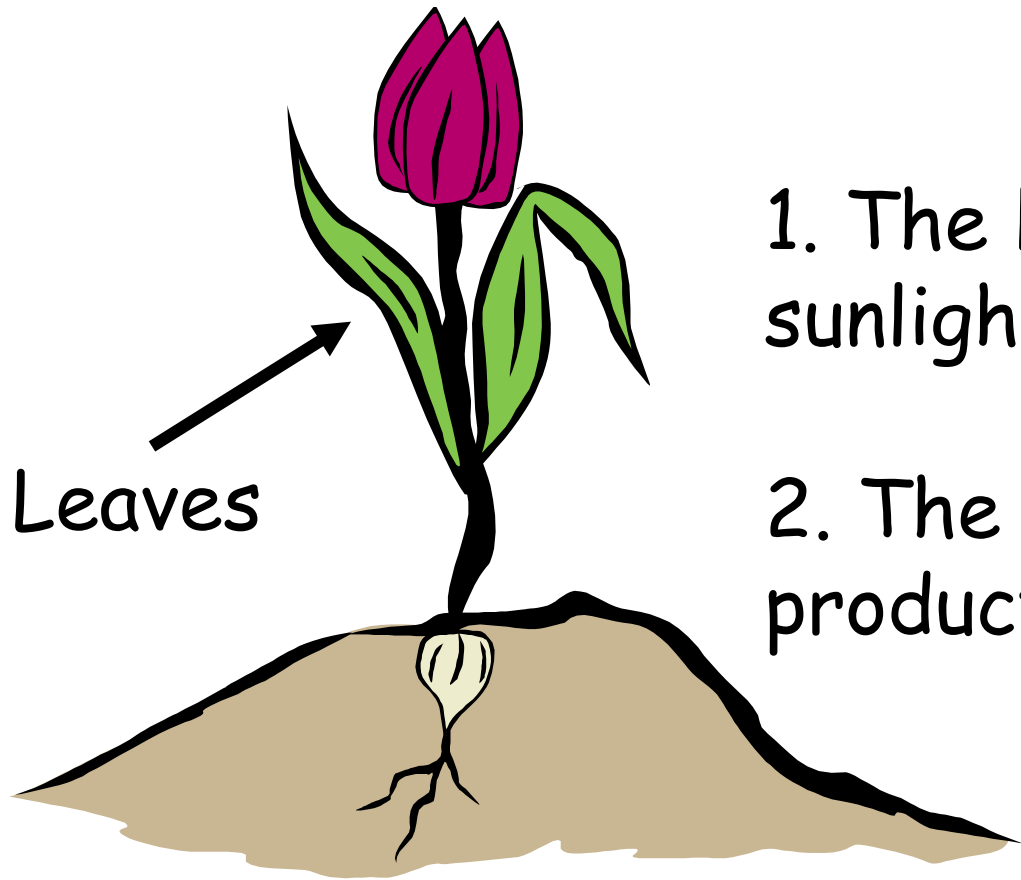


The flower has two functions...

1. The flowers are brightly coloured and scented to attract insects.
2. To produce pollen.

What is the function of the leaves?

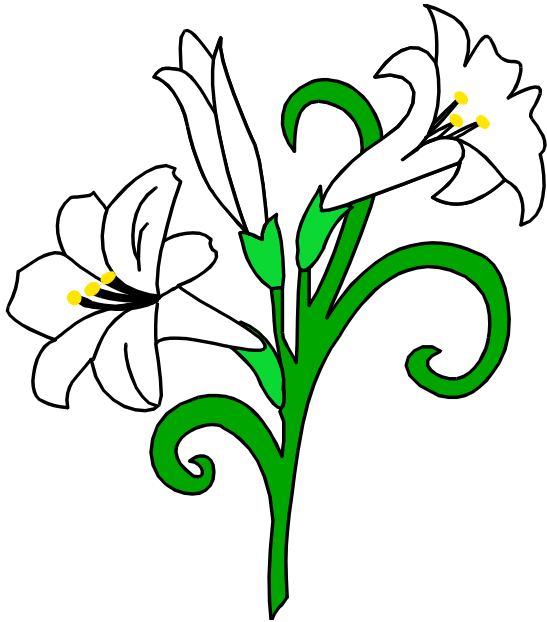
The leaves have two functions...

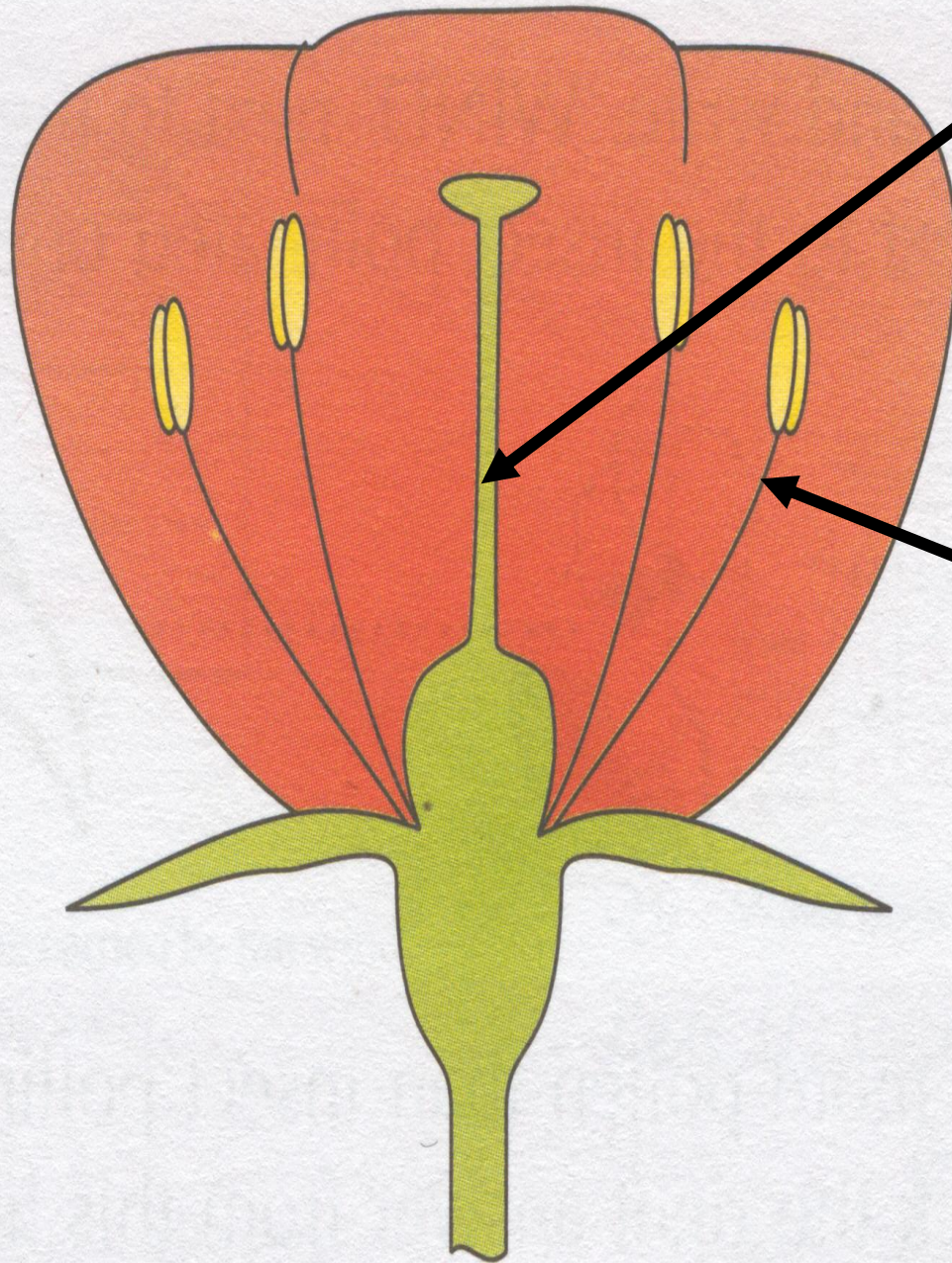


1. The leaves take in sunlight and carbon dioxide.
2. The leaves release waste products.

In order for humans to make a baby you need a male (father) and a female (mother).

It is the same with plants. We do not have male and female plants but all plants have male and female parts to them. Lets look at these parts under the magnifying glass.



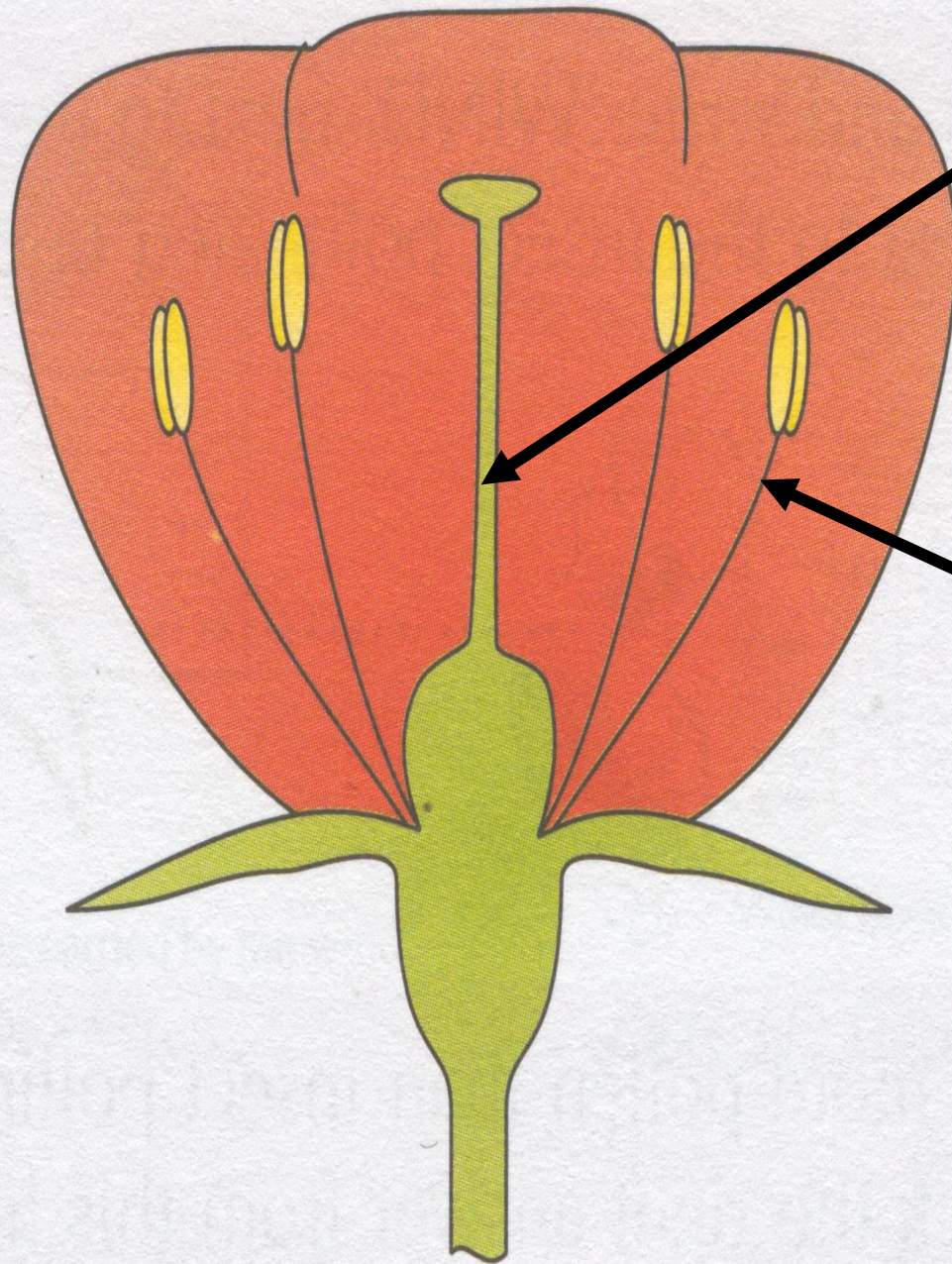


The Carpel

The female part of the flower is called the Carpel. The carpel is sturdy and found in the centre surrounded by petals. There is only one carpel per plant.

The Stamen

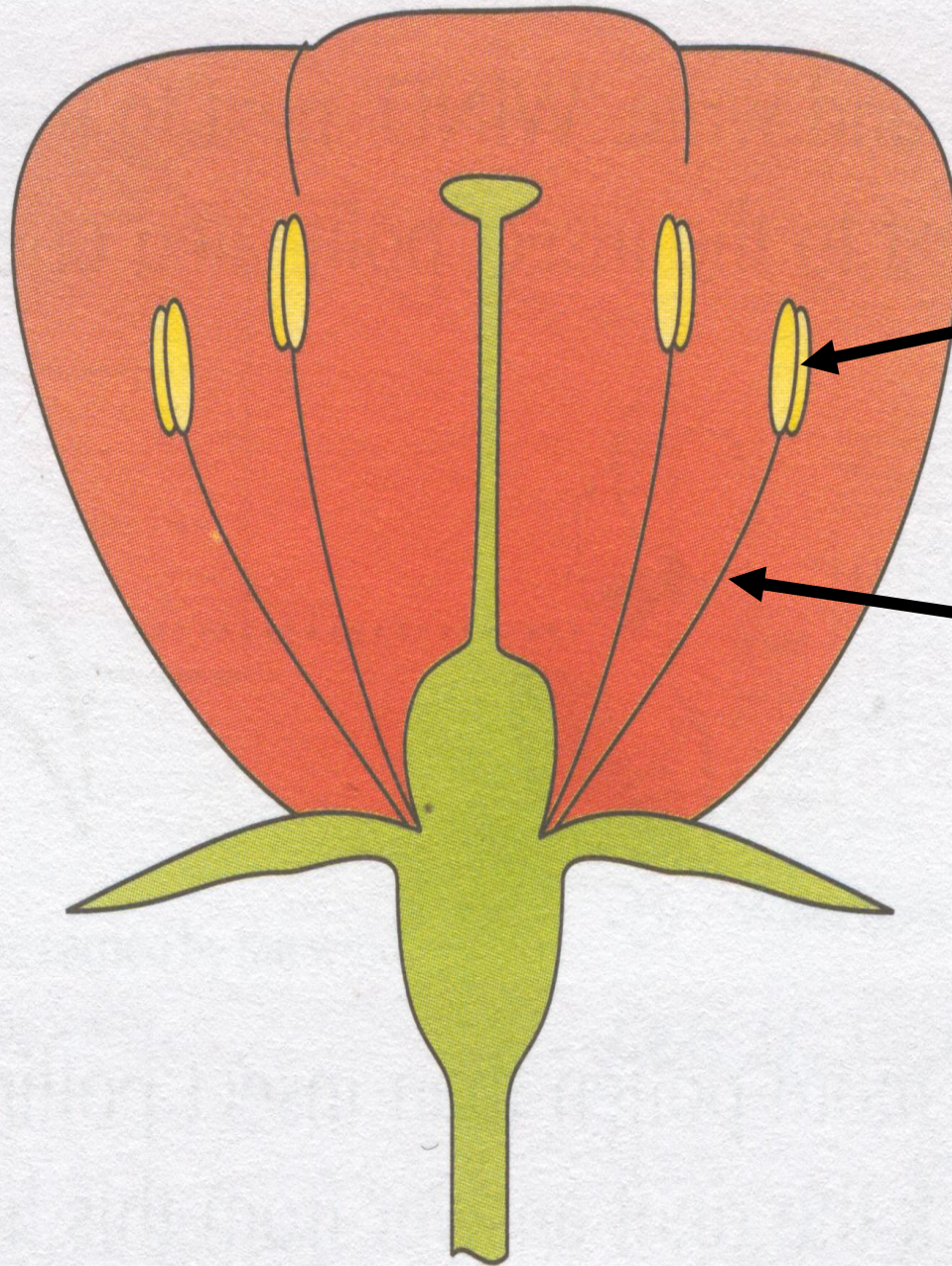
The male parts of the flower are called Stamens. These are long and flimsy and surround the Carpel. There are several stamens per plant.



Carpel

Stamen

Can you find the
Carpel and Stamens
on your plant.



Now lets look more closely
at the Stamens
(male parts).

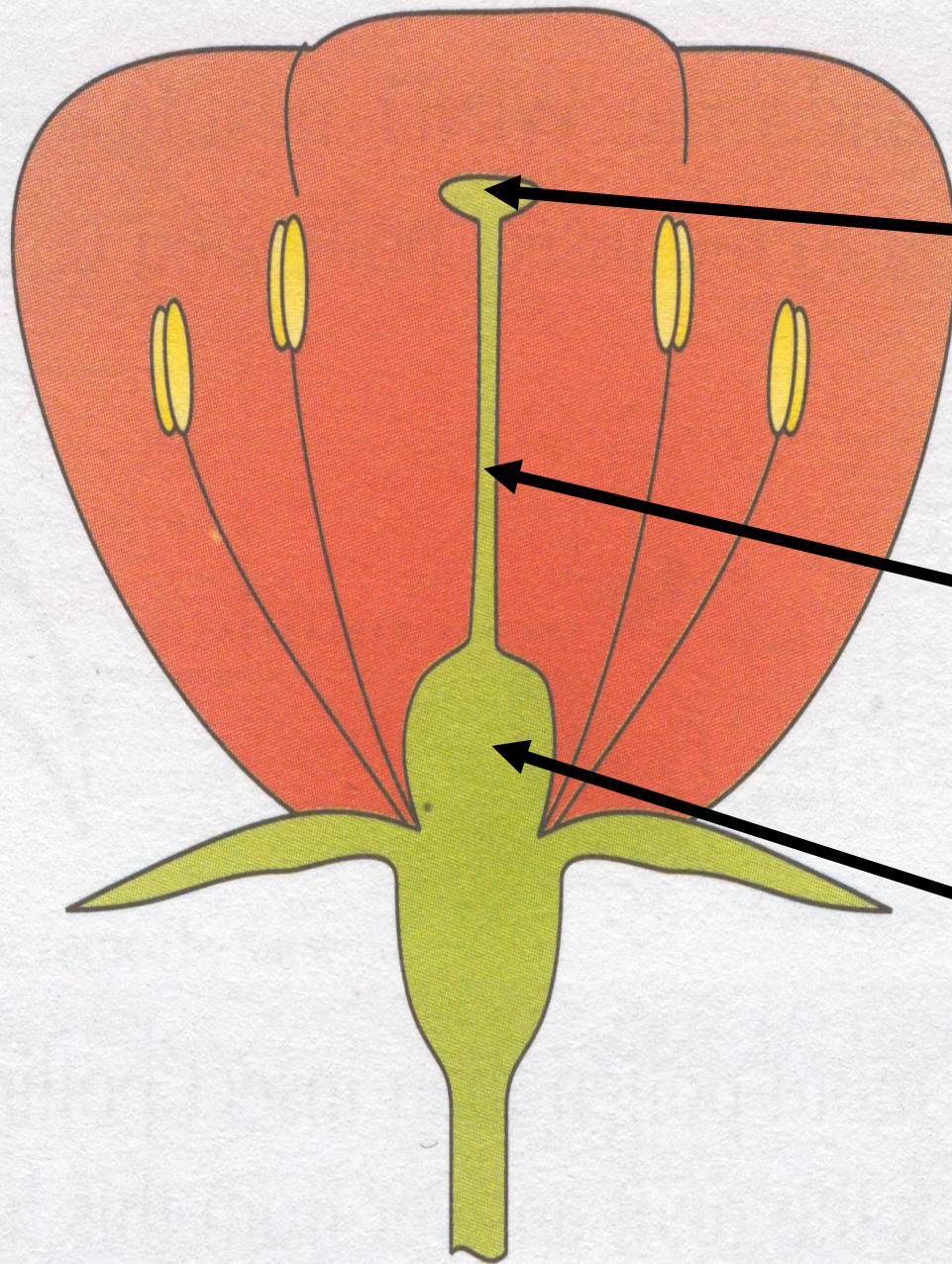
Anther

The top of the Stamen is
called the Anther.

Filament

The Filament acts in the
same way as a stem and
holds up the Anther.

What is the yellow powder
on the Anther?



Now lets look more closely
at the Carpel
(female parts).

Stigma

The top of the Carpel is
called the Stigma. What do
you notice when you touch
it?

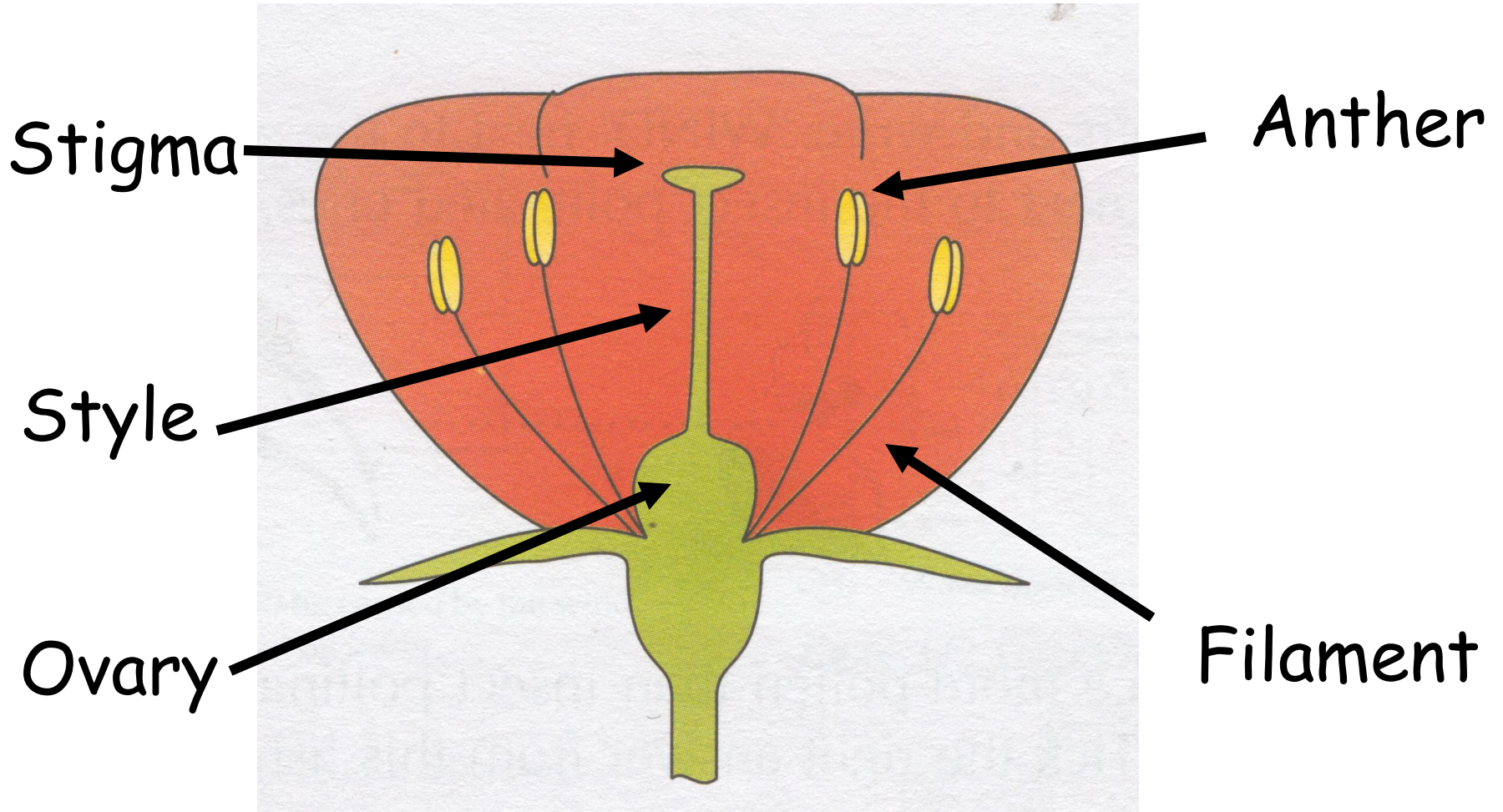
Style

The Style acts in the same
way as a stem and holds up
the Stigma.

Ovary

The ovary contains the
eggs.

The male and female parts of the flower



Your Task

You are going to work in groups to separate the flower into its different parts and to label each part.

Challenge

In your groups can you describe the function of the parts of a flower.