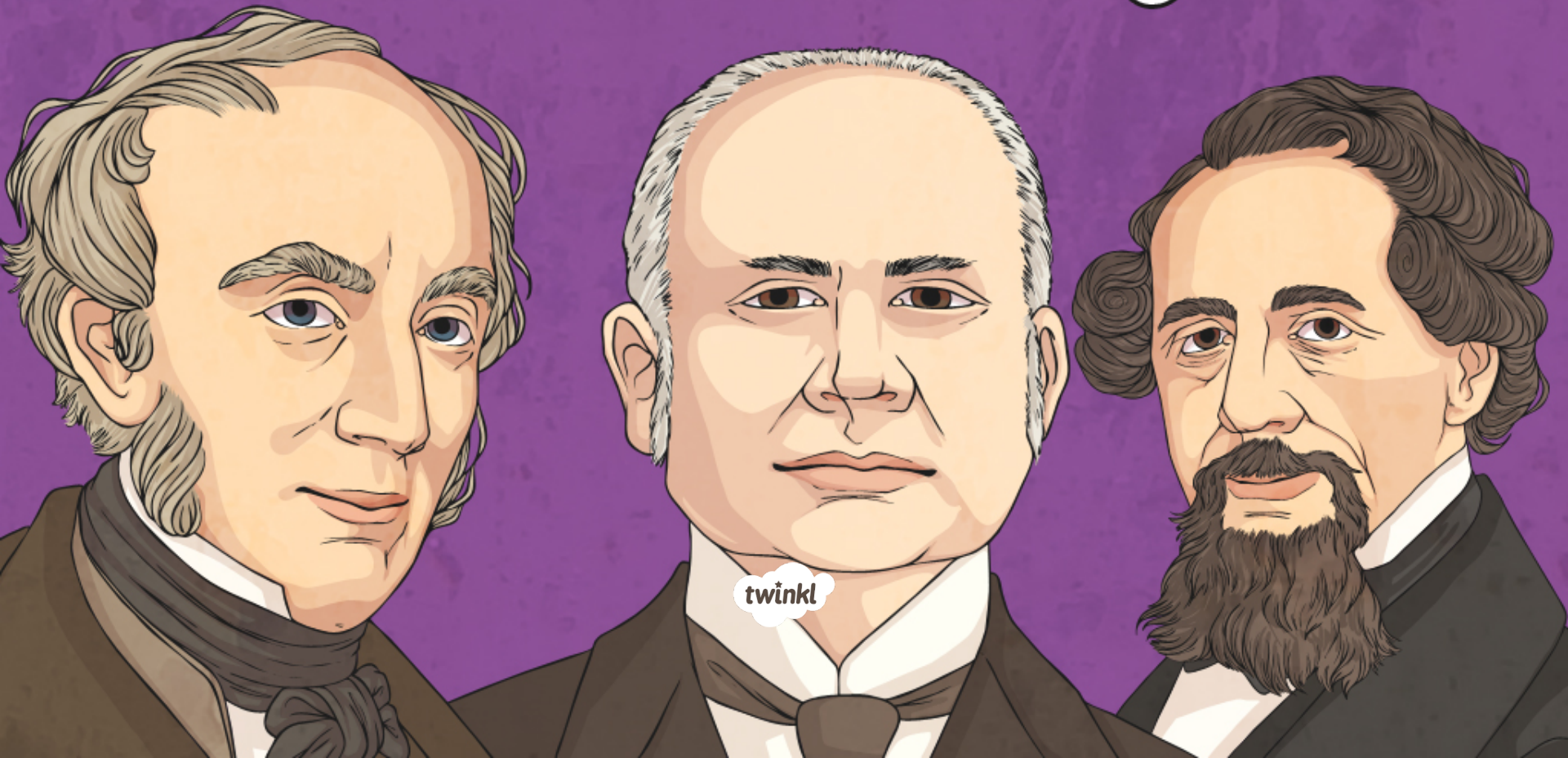
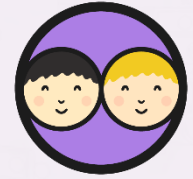


# The Impact of the Railways



# Positive and Negative



## Activity

Work with a partner to carefully read the Positive and Negative Cards.

Can you sort the cards into two piles reflecting positive and negative effects of the railways?

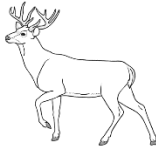
### Positive and Negative Cards

Can you cut out the cards and sort them into two piles - positive and negative?

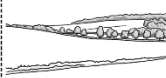
The building of new railway lines will mean that people can travel further to work.



Building the railways will mean that wildlife will be destroyed.



The new railways will spoil our beautiful countryside.



People will be able to go on day trips to the seaside and other interesting places.



People won't be using horse drawn coaches anymore which will destroy the coaching business.



Using steam locomotives on the railways will help people get goods to the market more quickly.



The smoke from the steam engines could damage livestock and fields.



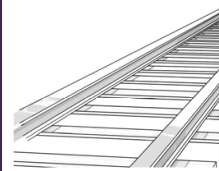
The viaducts and bridges will improve the look of our countryside.



The trains are dangerous and accidents could happen.



The building of new railway lines will mean that people can travel further to work.



The smoke from the steam engines could damage livestock and fields.

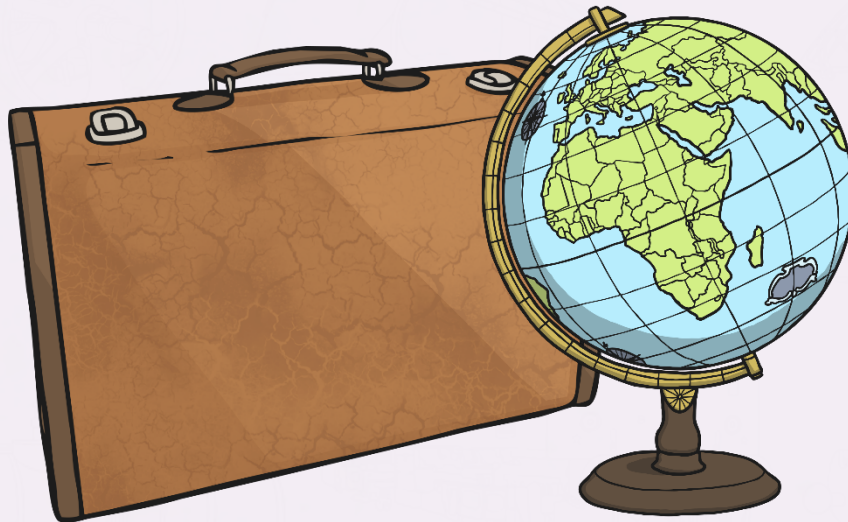


# Thomas Cook



Thomas Cook came up with the idea to offer tours and breaks to people wanting to visit more of the country and he formed the company Thomas Cook and Son.

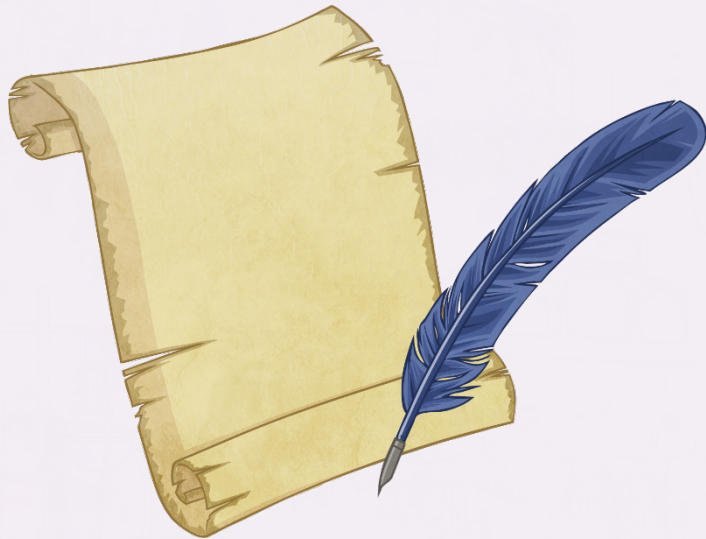
He made use of the railway lines to transport his customers from place to place.



# William Wordsworth



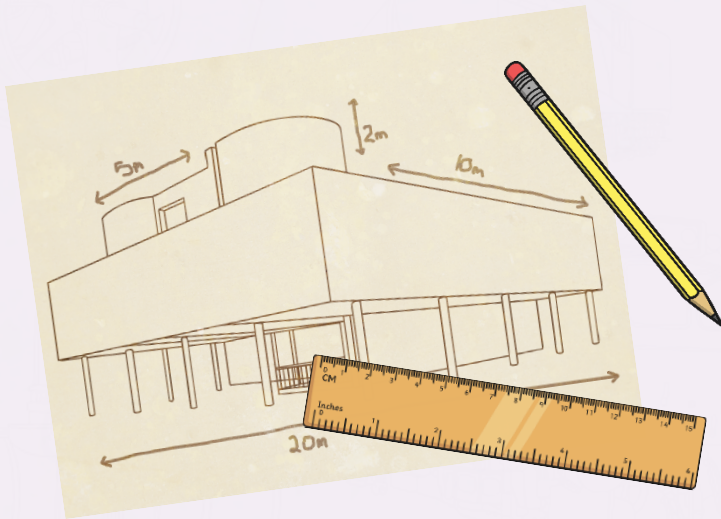
William Wordsworth was a poet who lived in the Lake District, Cumbria. He thought that bringing railway lines into the area would spoil the beautiful countryside and scenery. Wordsworth objected to lots of the plans for building new railway lines.



# George Godwin



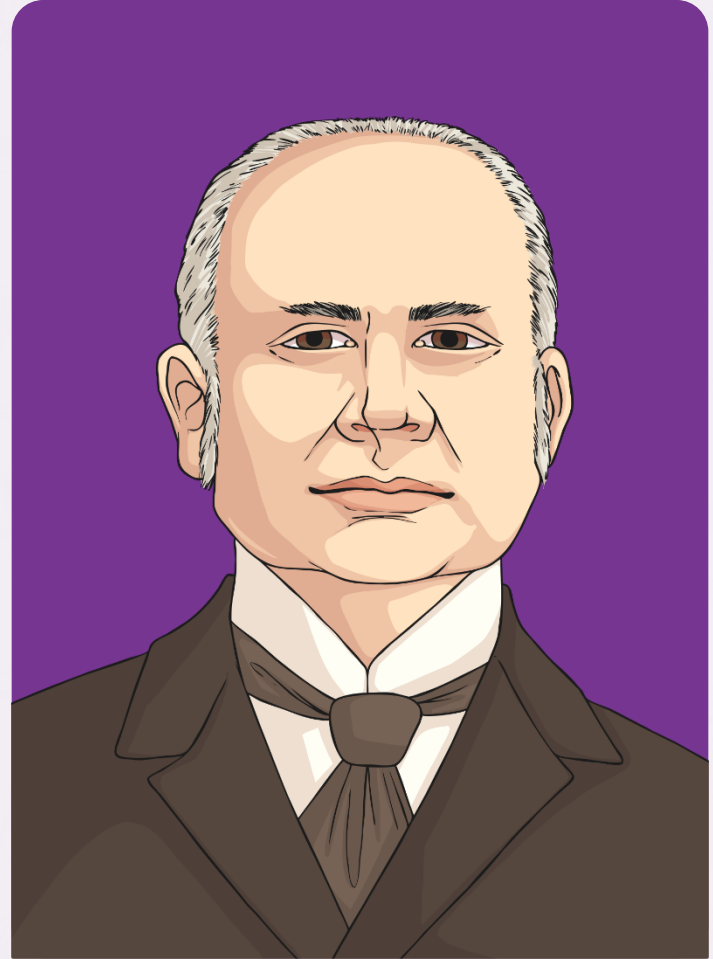
George Godwin was an architect and journalist who designed many railway features such as bridges. He thought that railways would enhance the look of the countryside and provide many benefits to the people of Great Britain.



# John James Sainsbury



John James Sainsbury was a grocer who set up and ran a chain of grocery stores with his wife Ann. The development of the railways helped Sainsbury to bring goods to stores more quickly which meant that they were fresher for the customers who bought them.



# Charles Dickens



Charles Dickens was an author and social commentator. He was injured when a train on which he was travelling crashed. Although Dickens survived, many of the passengers did not. Dickens did use trains after that but he preferred not to and he was concerned for the safety of people who travelled on them.



# Debating Time



## Activity

Now it's over to each character to present their viewpoint about the railways. Listen carefully. Can they persuade you that their views and ideas are correct?

