

## LC: Can I explain how we see light?

<https://classroom.thenational.academy/lessons/how-do-we-see-light-cnk3ac>

Watch the online lesson video. The following questions will be answered during the video. Make a note of the answers either in your pink books or save them on this document to submit to me on google classroom.

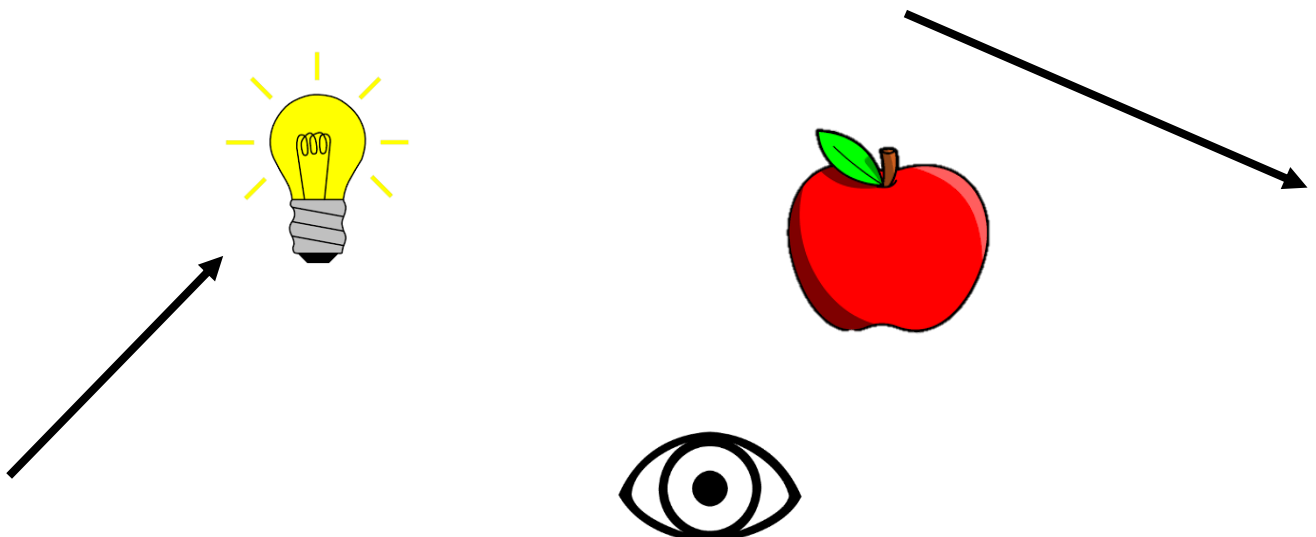
### Activity 1 - Explaining what happens to light

Arrange the sentences into the correct order to explain how we see things. Either type the number to show the order in the box if you are submitting this digitally, or write out the sentence in your pink books. The first one has been done for you.

Order number	
	Light reflects off the object.
1	A light source produces light.
	Light travels in a straight line from the light source to the object.
	Our eye sends a signal to our brain.
	Light travels from the object to our eye.
	Light enters the eye through the pupil.

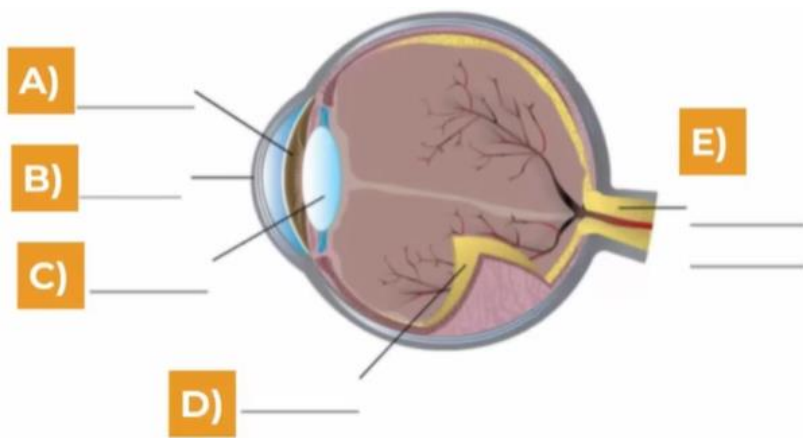
### Activity 2 - Drawing a diagram

Draw your own diagram to show how we see things. You will need to include a light source, an object, an eye. There should be straight lines drawn between them with arrows to show the direction that the light is travelling in. If you are submitting this digitally, I have popped some clip art images and arrows for you to pick up, drag and rearrange. Take care with the direction of the arrows.



### Activity 3 - The Human Eye

Label the diagram to show the parts of the eye. If you are working in your pink book, you can write the letters with the correct label.



A	
B	
C	
D	
E	

### Activity 4 - The Human Eye

Match the part of the eye to its function:

**pupil**                      **lens/cornea**                      **retina**                      **optic nerve**

	Carries signals from the eye to the brain.
	Focuses light onto the retina.
	A hole through which light enters the eye.
	Cells that sense light and convert it into electrical signals.

### Activity 5 - Glasses and Sunglasses

How do glasses help some people to see?

Why is the glass in sunglasses translucent?