

Moving Water



Water Transportation

The process of water transportation is the way water moves through a plant.

The roots absorb water from the soil.

The stem transports water to the leaves.

Water evaporates from the leaves.

This evaporation causes more water to be sucked up the stem.

The water is sucked up the stem like water being sucked up through a straw.

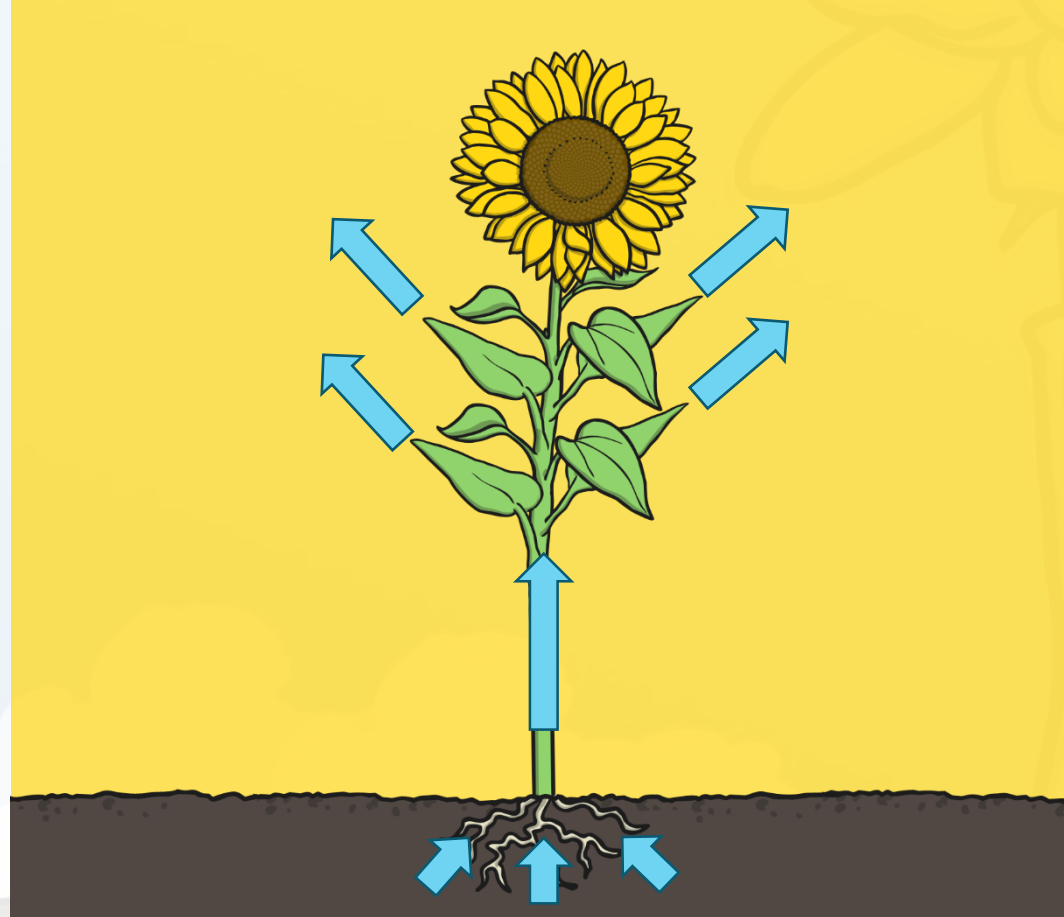


Water Transportation



Can you explain the process of water transportation to your partner?

Use this diagram to help!



Water Transportation



How did you do?
Did you explain it
correctly?

