

Friday 11th September

LC: Can I research an artist?

Over the next few weeks, we will be completing an art project linked with our science unit!

Science Week Objective: *By observing artists' work, can you capture images of a chosen animal?*



Henri Rousseau

Henri Rousseau was a famous French painter.

He was born in 1844 in Western France, and attended boarding school.

At school, Henri Rousseau won prizes for drawing and music.

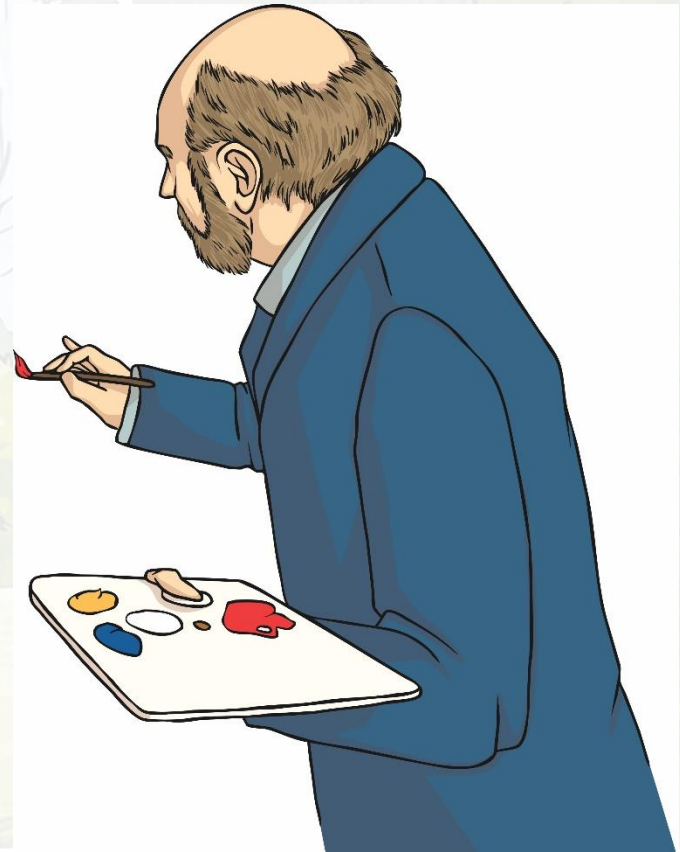


Henri Rousseau

After he finished school, he spent his early life working as a tax collector.

He taught himself to paint in his spare time, and started displaying his work at galleries in 1886.

He is best known for his jungle scenes, such as *Tiger in a Tropical Storm* (*Surprised!*)



Tiger in a Tropical Storm (Surprised!) 1891

by Henri Rousseau



Henri Rousseau



His art was called 'Post-Impressionism'.

This was an abstract style of art, which means that he didn't try to paint things exactly as they look in real life.

Henri Rousseau

Henri Rousseau was heavily criticised by lots of artists because they thought his painting was not very clever.

However, lots of other artists, such as Pablo Picasso, liked his work.

Henri Rousseau



Henri Rousseau also played the violin.

Henri Rousseau

Artists Paul Signac, Manuel Ortiz de Zárate, Robert Delaunay, Sonia Terk and the sculptor Brâncuși all attended Henri Rousseau's funeral.



Friday 18th September

LC: Can I research an artist?

Today, use your time to research the artist and have a look at his work.

Use your research to create a Artist Profile. Include a drawing of him, too!

You may choose to use a supported template or create a profile in your book, using your own design and layout.



Friday 18th September

LC: Can I evaluate an artist's work?

In today's session we will be looking at the work of Henri Rousseau.

What did you learn about this artist last week?

Science Week Objective: *By observing artists' work, can you capture images of a chosen animal?*



How To Evaluate Art

Evaluating art is more than just liking it or disliking it, you need to be able to look more closely at the elements art and the principles of design that they have used to be able to comment on how effectively the artist has used them to communicate his message. It's okay to not like a piece of art but still appreciate the artists use of elements and design.

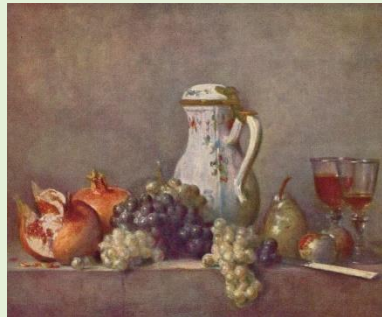
The first thing that you would do when looking at a piece of art is to decide what type of art it is. Is it an example of **abstract**, **representational** or **naturalist** style?

abstract



Wilson Leonel - Painting 142 [[flickr](#)]

representational



Alex Grey [[alexgrey.com](#)]

naturalist



Woman Before a Mirror
Edouard Manet (1877) [[Wikiart](#)]

What Is The Content?

Take a look at the art. What is the content or subject? What message or story is the artist trying to communicate? Is the story or message clear?



Kees van Dongen - At the Racetrack [[flickr](#)]

Composition

The composition of art refers to the overall design or layout. Look closely at the artists use of proportion, balance, contrast, pattern, rhythm, variety and emphasis.



William Murphy [[Flickr](#)] - Street Art & Graffiti

Colour

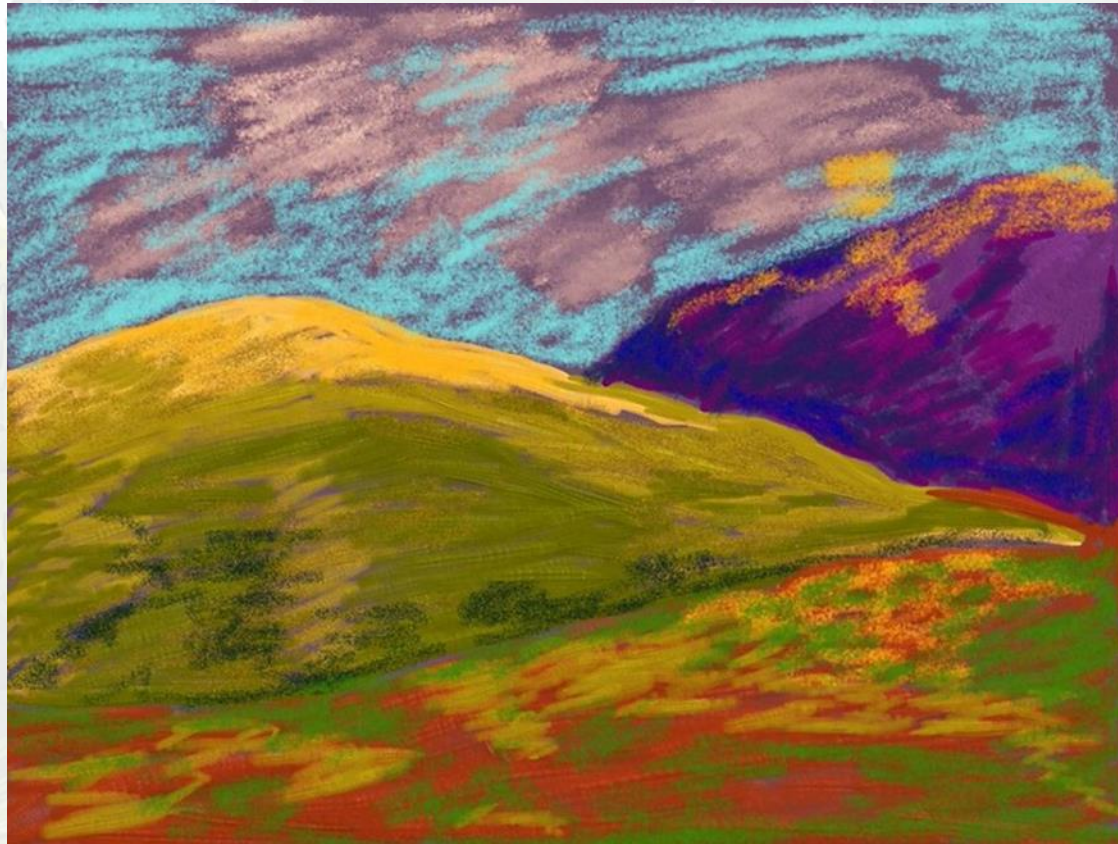


The use of colour can have a dramatic effect on your opinion of art because colour can convey feelings. Look at the following painting. How do the colours make you feel when looking at this painting?

Woman in Red in the Forest
Henri Rousseau [\[Wiki Art\]](#)

Technique

Different techniques, like brushstroke, can also convey a feeling. If an artist uses long flowing brushstrokes it can convey a feeling of peace or smooth rhythmic movement. Has the use of the technique helped convey them message or story?



Jean M
Ipad Painting
[\[Flickr\]](#)

Friday 18th September

LC: Can I evaluate an artist's work?

What is the content/subject/story of the picture?

This painting shows...I believe the story it tells is...

What is the composition?

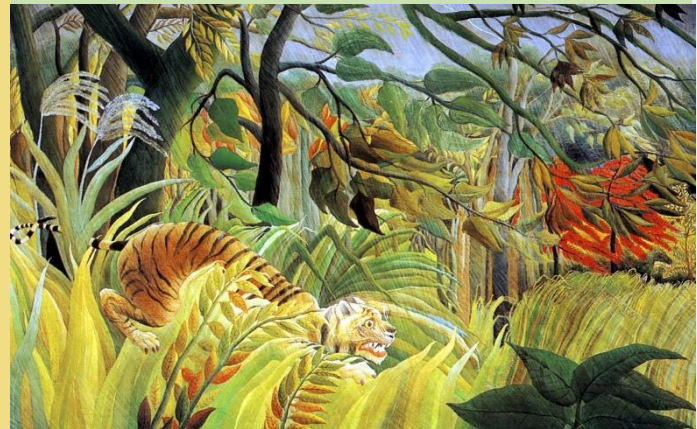
The picture has...size...position...

What colours have been used?

The picture has been painted in...this is because...It makes the painting feel...

What techniques has the artist used?

The picture has been created using...It has...



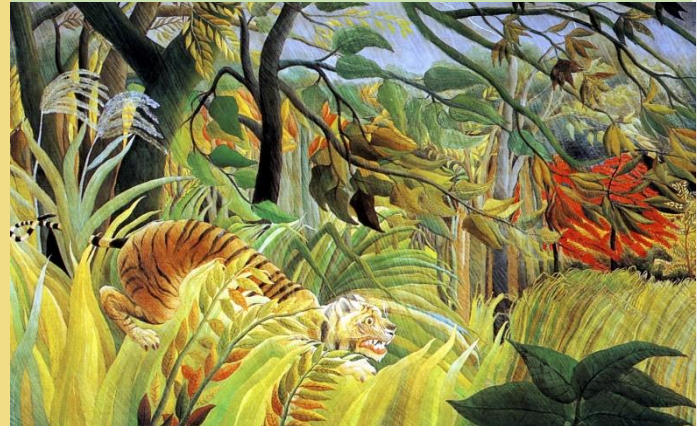
Friday 25th September

LC: Can I replicate a chosen piece of art?

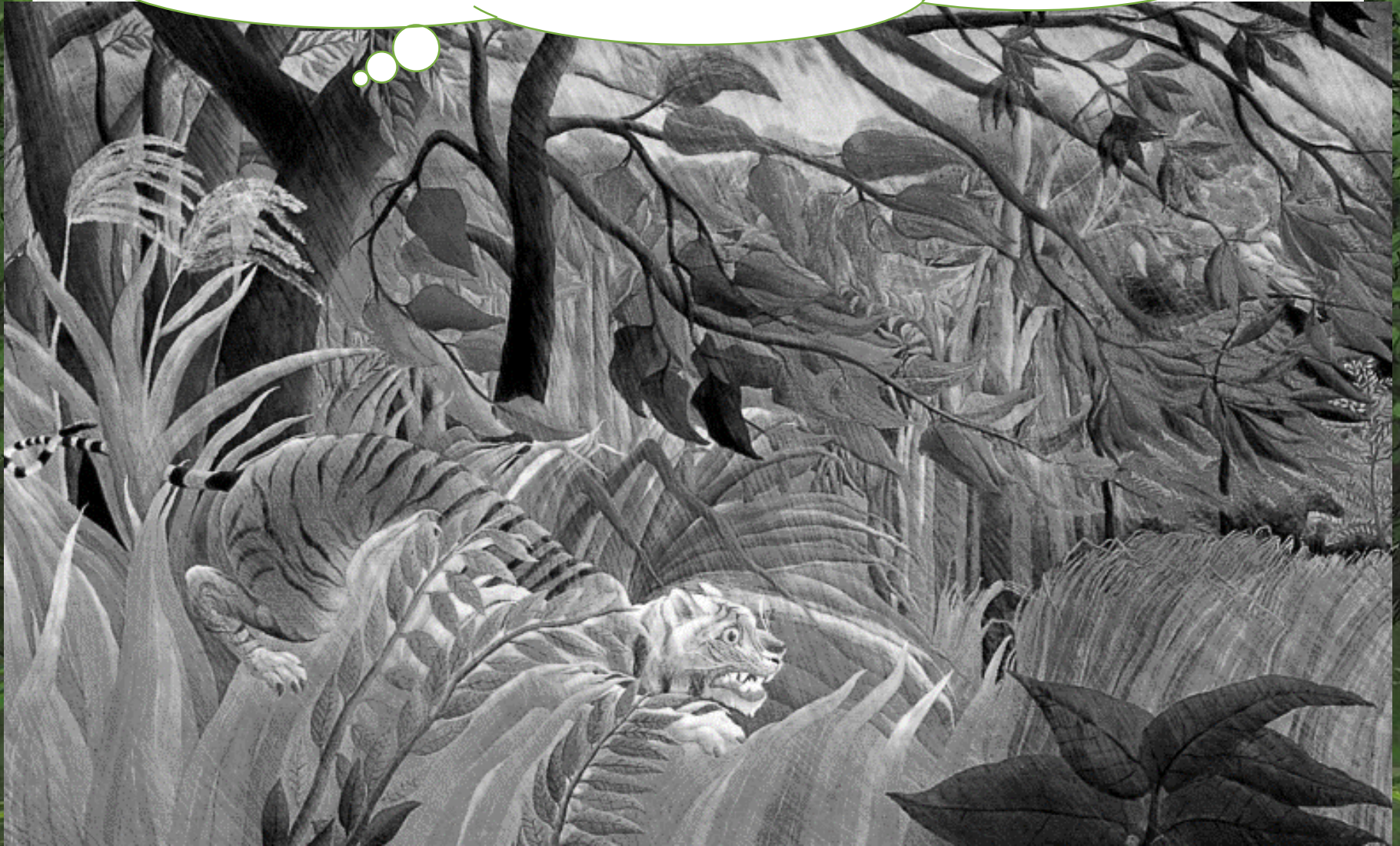
In today's session, you will choose your favourite piece of work from Rousseau and replicate it.

First, complete a pencil sketch, full page, in book. You must shade to show depth.

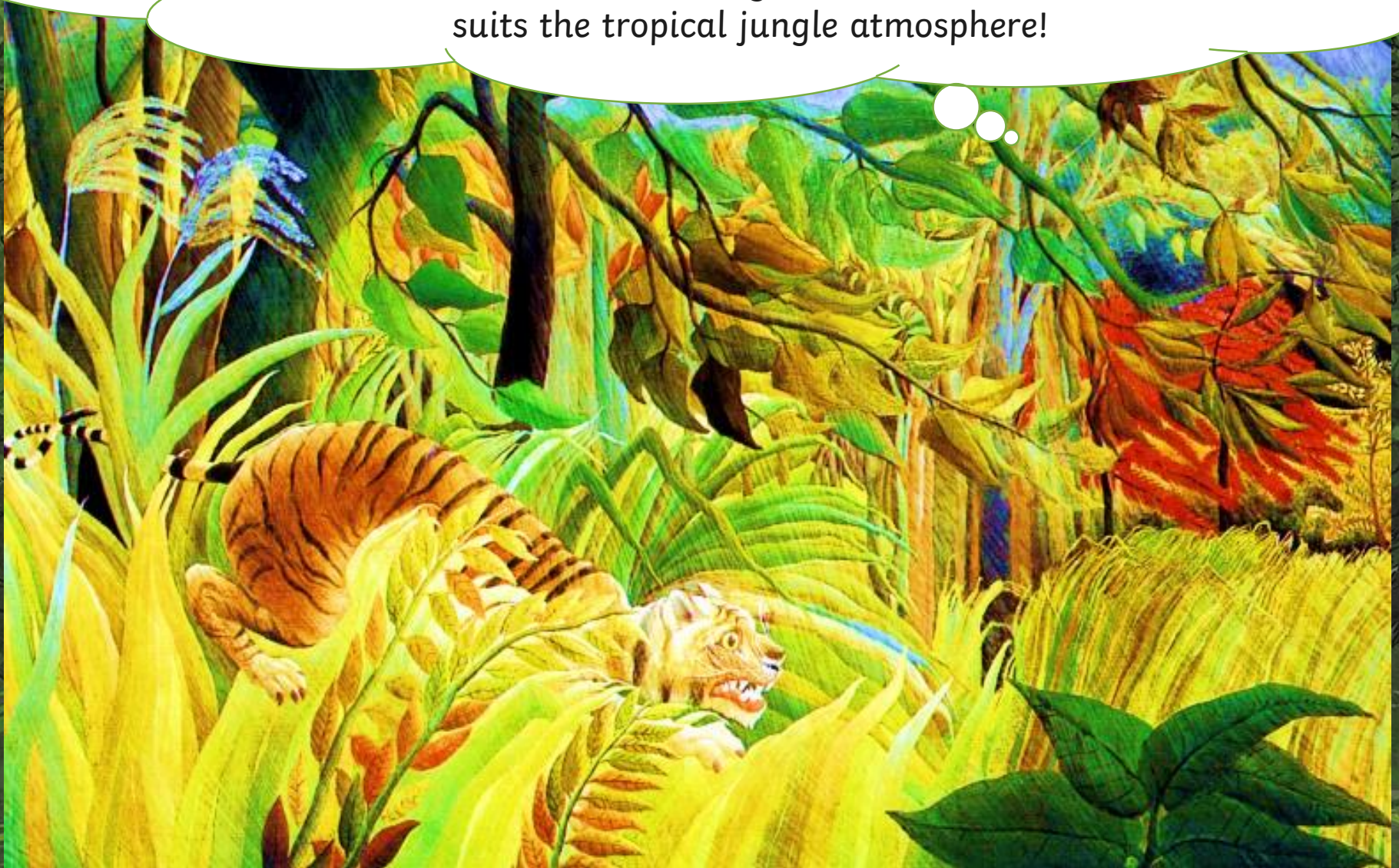
Then, choose a colour medium to replicate the piece as a second picture.



I have chosen the jungle landscape with a tiger; I have chosen this because I like how the tiger is positioned between the foreground and background. I can see that he's about the pounce on his prey. I wonder what is hidden in the bushes?



I have replicated the painting using oil pastels. I know that Rousseau used oil paints so I've tried to use a similar medium. I also like how bright the colours are and this suits the tropical jungle atmosphere!



Friday 9th October

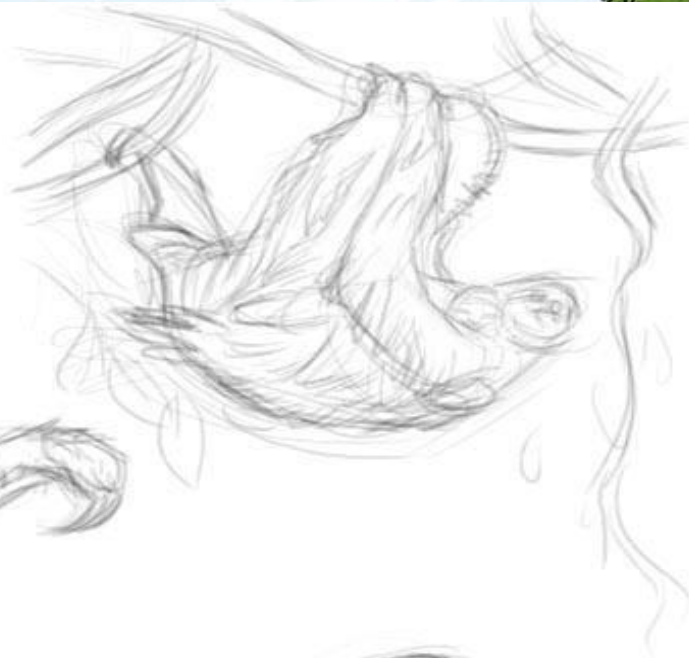
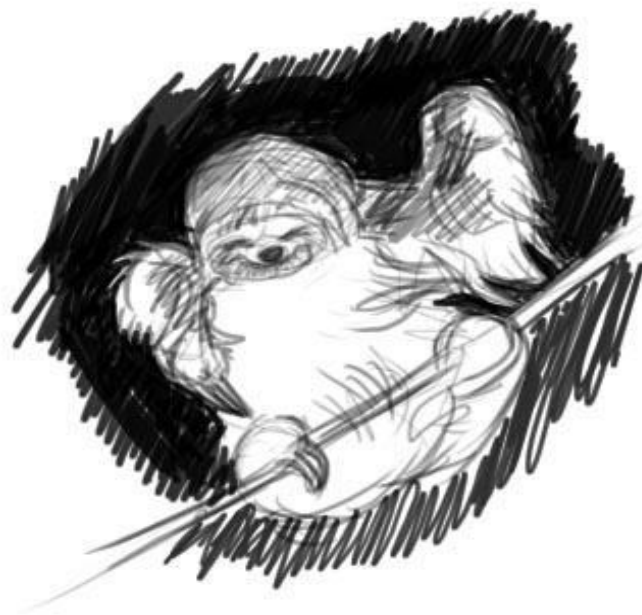
LC: Can I create a draft of my own design?

In today's session, you will begin to compose your own piece of work.

Begin by choosing an animal – you don't have to use the same animals that Rousseau has used.

*Using secondary sources (images taken of the animal) sketch different pictures of them. These are called **observational sketches***



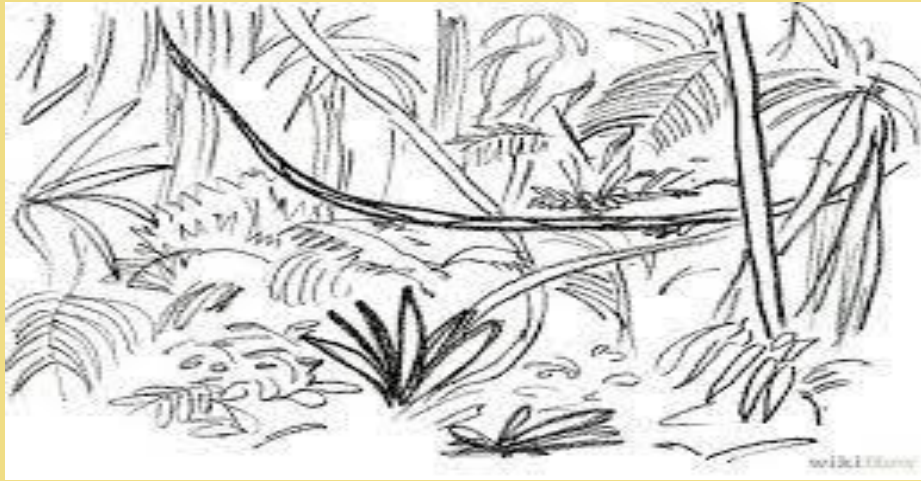


Friday 2nd October

LC: Can I create a draft of my own design?

Next, consider the foliage in the fore and background.

Like you have done with your chosen animal, sketch examples of these living things that you will be including in your piece.



© 2016 EdTechLens

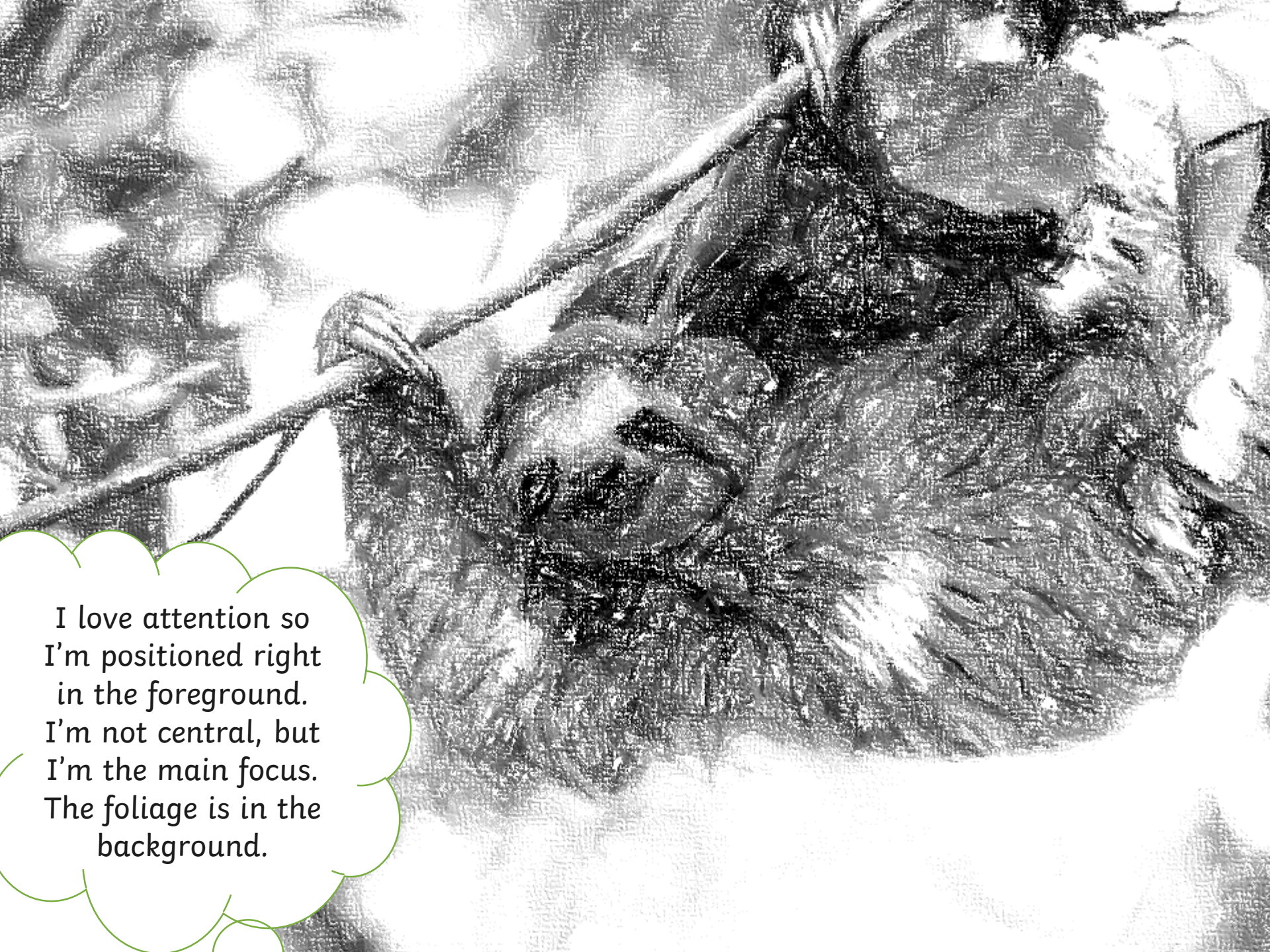
Friday 9th October

LC: Can I create a draft of my own design?

Now you must **compose** your picture. Mix the two elements together into **a composition** you're happy with. Consider what your **main focus** is and what you want to see in the **fore and background**.



I'm a super sneaky sloth that likes to hide amongst the foliage. I'm centred (in the middle of the picture) but not in the foreground.



I love attention so I'm positioned right in the foreground. I'm not central, but I'm the main focus. The foliage is in the background.

Friday 9th October

LC: Can I create a draft of my own design?

Think about where your animal is positioned and how the fore and background support that.

- *Where is your animal? Left, right or centre?*
- *Are they in the foreground? Are they concealed?*
- *What surrounds the animal? How does the background add depth?*



Friday 16 October

LC: Can I use a chosen medium to create my own piece of art?

Now it is time for your final piece! You will have the afternoon to compose and complete your final picture inspired by Rousseau.

Over the course of the past few weeks you will have considered:

The animal you wish to display

The background foliage

The position of your animal and what is present in the fore and background

The colour scheme and medium (paint, pastel, oil) you will use

Have fun and create 😊

Top Tip: If you have chosen to use a pastel (oil or soft) these can transfer (smudge) easily. Have a scrap piece of paper under your hand so that you are not rubbing colour elsewhere whilst working



Friday 23rd October

LC: Can I evaluate my work

Use today's session to complete your final piece. When done, it's time to evaluate.

Evaluating art: Art is personal and you, as the artist, have chosen to do certain things to make your final piece. Are you happy with the outcome?

Evaluate the following things:

The over all look – are you pleased with how it has turned out?

The composition – did the position and size of your animal work well?

The medium – did the medium you used compliment the picture?

*The effect – is it neat? Is it clear?
Are there smudges?*

*What could I improve?
How?*



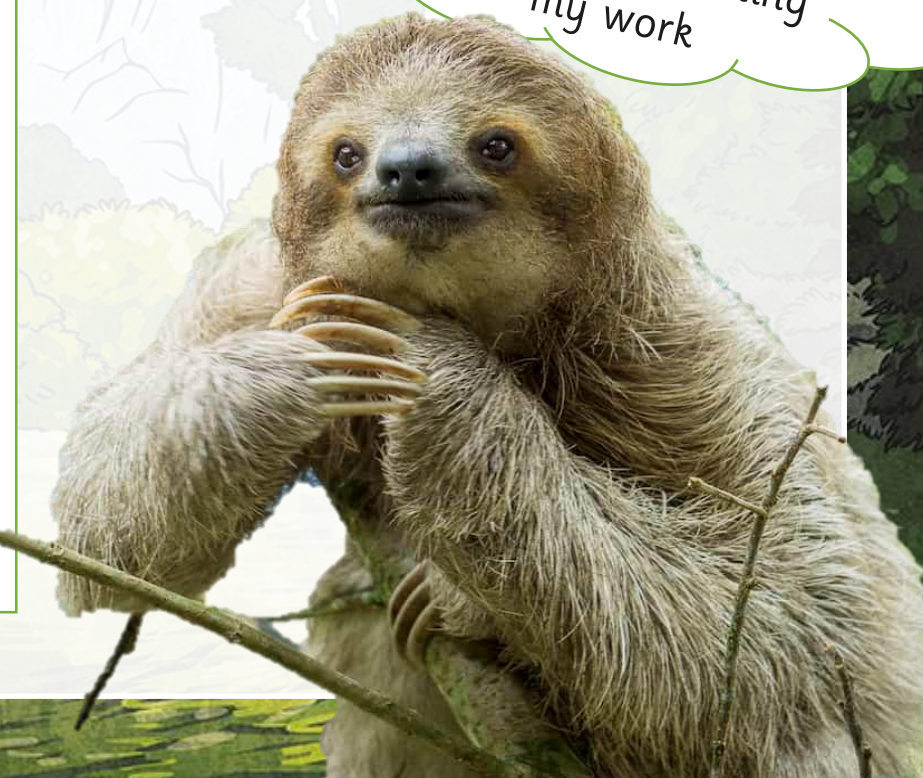
Friday 23rd October

LC: Can I evaluate my work

My Evaluation

I'm really pleased with my picture. I think that it displays my chosen animal, a sloth, clearly. I placed him at the front and centre so he is clear to see. The medium I used, oil pastel, worked well as it is bright like Rousseau's paintings. However, I made some smudges which has made the overall effect a little messy. I think a better medium would have been paint as I could have added finer detail such as the fur texture of the sloth.

To improve, I would possibly place the sloth amongst the foliage to add depth and use to paint to add detail.

A photograph of a sloth sitting on a branch, looking towards the camera. A thought bubble above the sloth contains the text: "I'm deep in thought, evaluating my work".

I'm deep in thought, evaluating my work



twinkl