

Similes and Adjectives



twinkl



Aim

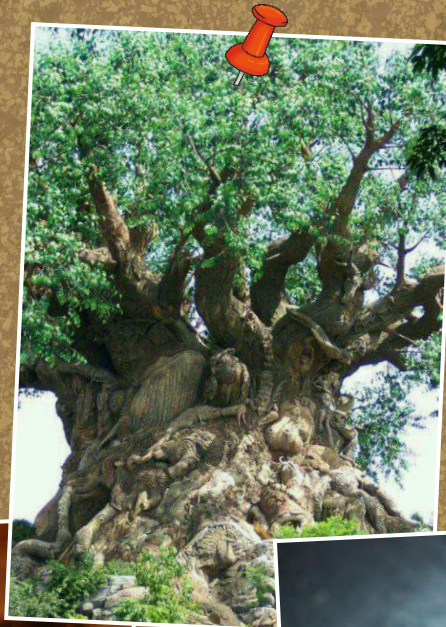
- To revise adjectives and similes

Success Criteria

- To be able to explain and give examples of simile and adjectives
- To be able to improve sentences using adjectives and similes
- To be able to create similes and choose adjectives

Starter

Can you think of any similes for the pictures?



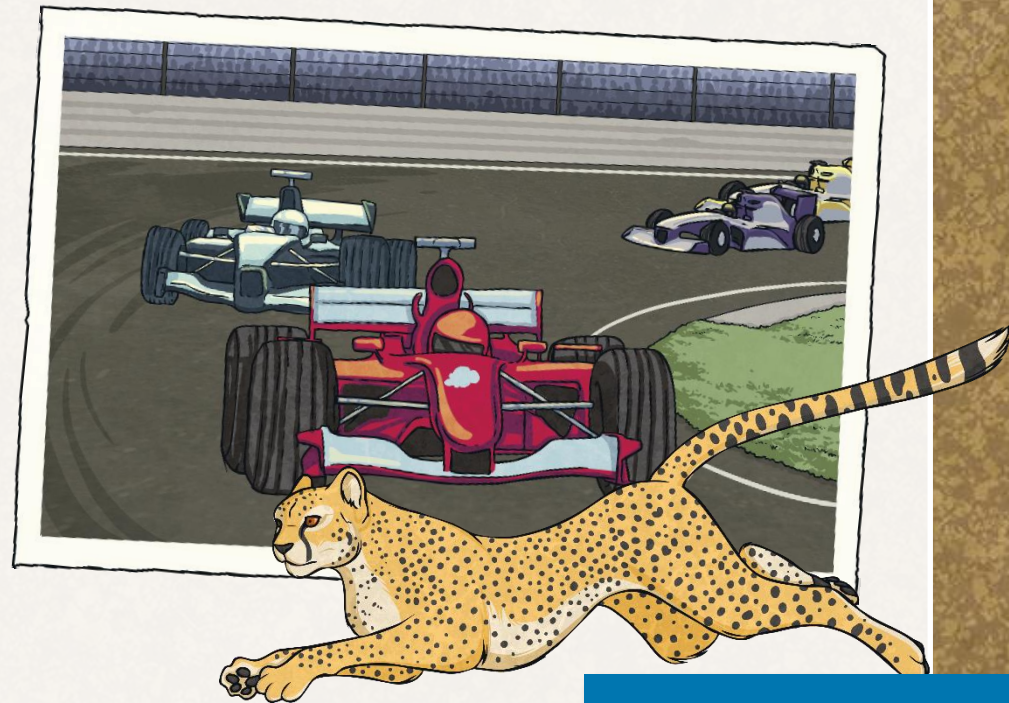
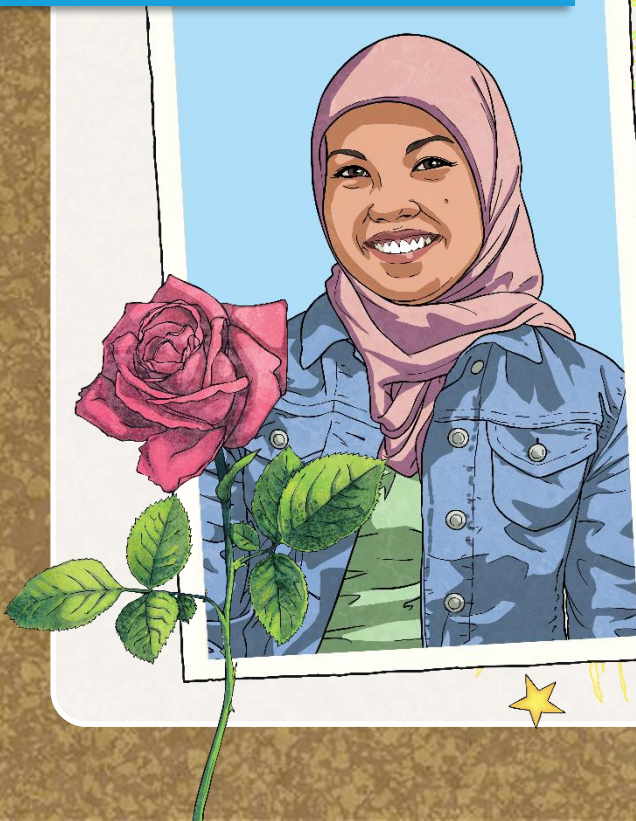
Can you think of any adjectives to describe the pictures?



Simile Reminder

A simile is a way of describing something by comparing it to something else using 'like' or 'as'.

Her eyes are **like** stars and her lips are **like** roses.



The car was as fast **as** a cheetah

Now you try...

Finish the similes:



The doll's face was as smooth as...



Greece was hot like...



The book was as exciting as...



The night was as black as...



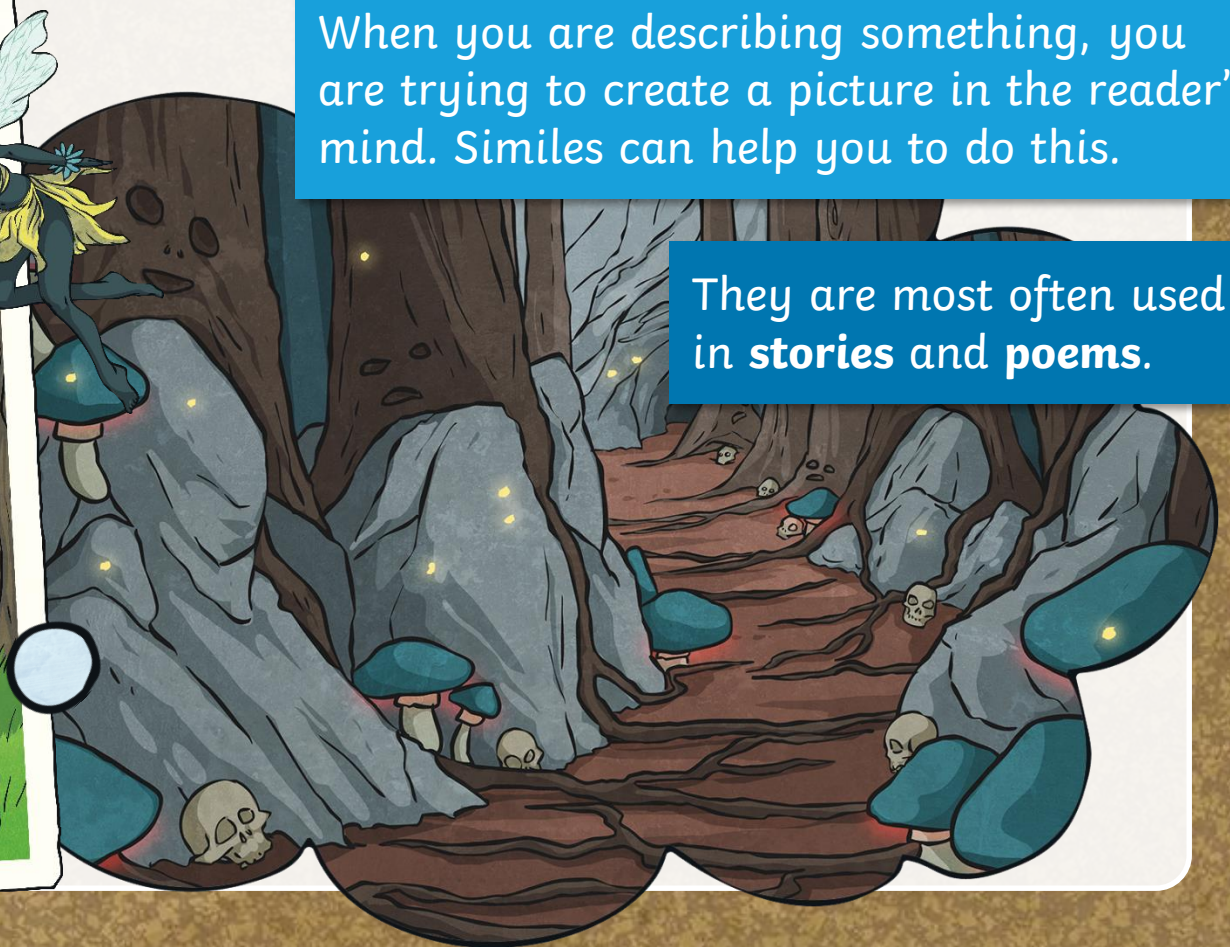
The fireworks were colourful like...

Why?

Why do we use similes and adjectives?

When you are describing something, you are trying to create a picture in the reader's mind. Similes can help you to do this.

They are most often used in **stories** and **poems**.



See How It Works

Why do we use similes and adjectives?

**The dog was big
and fierce.**

Now if we add
adjectives and similes...



**The house was
beautiful.**

Now if we add
adjectives and similes...

The black, scruffy dog was as big as a wolf and fierce like a very angry bear.

The ancient house was beautiful like an old fashioned painting.

Isn't that better?

Improve These Sentences

Where you see * put in an adjective.
Where you see ... put in a simile.

?



?



?



The dog was * and * and ran like a...

The * lady had a voice like a...

The * prince asked the * princess to marry him. She was as happy as a...

Sunflowers

On the next few slides you'll see some pictures of real sunflowers. It's your job to write at least three adjectives and at least three similes about the sunflowers. Remember to try to think of words that are exciting and unusual. Use a thesaurus to help.

Words to avoid:

yellow

green

tall

pretty

nice

good

bright



Photo courtesy of ted_M8@flickr.com - granted under creative commons licence - attribution



Photo courtesy of NAPARAZZI@flickr.com - granted under creative commons licence - attribution



Photo courtesy of Moyan_Brenn@flickr.com - granted under creative commons licence - attribution

Copyright © Moyan Brenn - Flickr.com

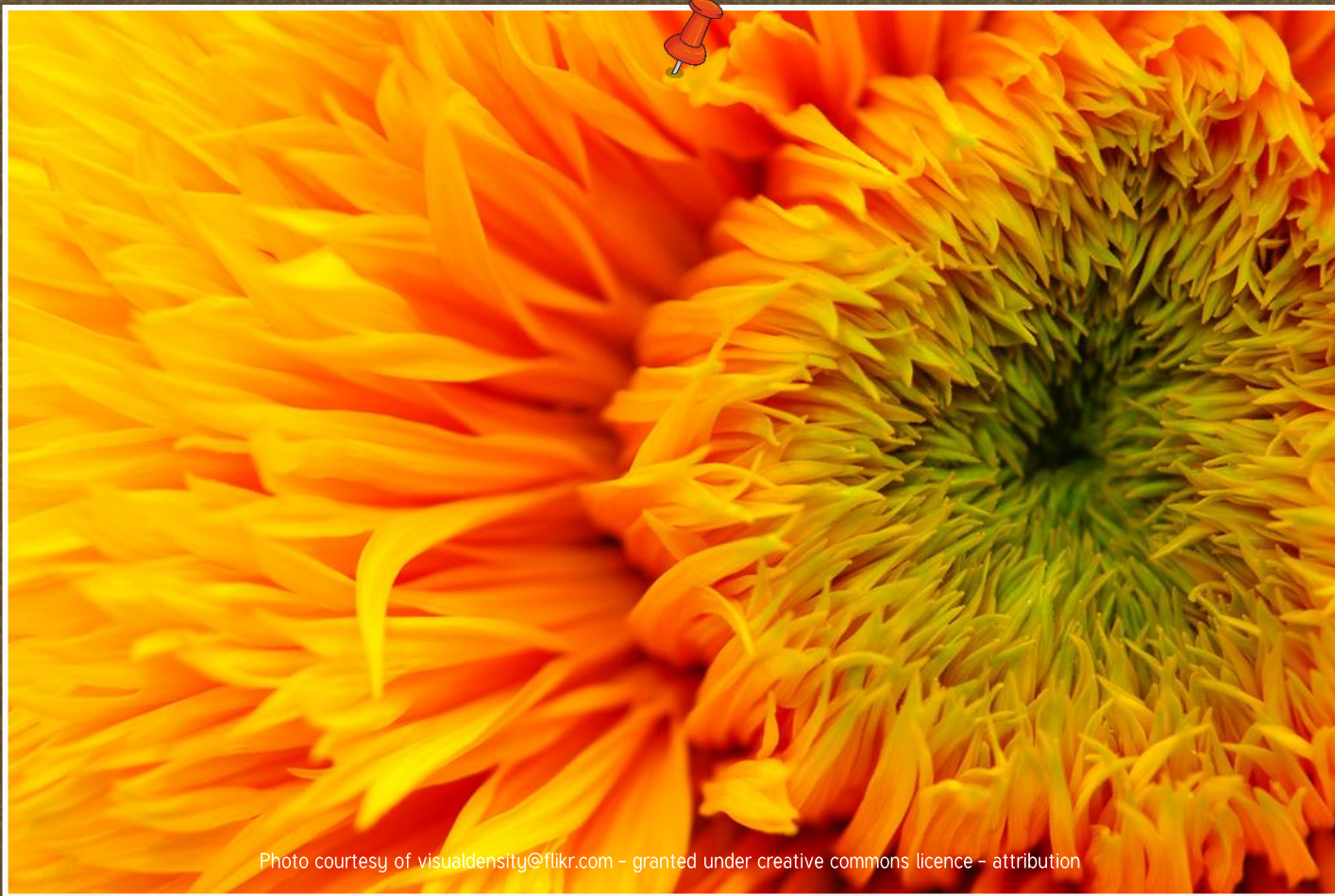


Photo courtesy of [visualdensity@flickr.com](https://www.flickr.com/photos/visualdensity/) - granted under creative commons licence - attribution

© BHASKAR PEDDHAPATI | PHOTOGRAPHY

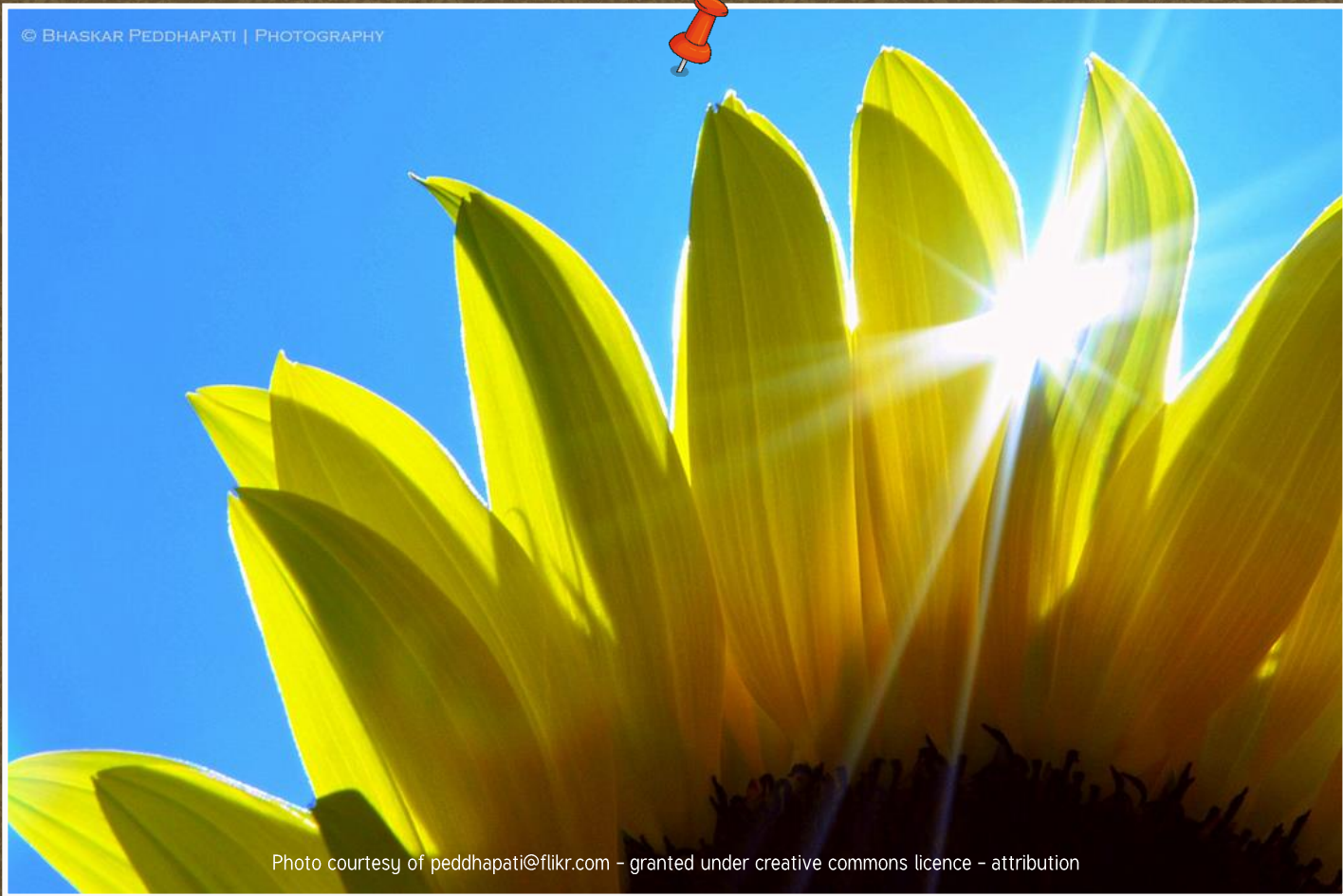


Photo courtesy of peddhapati@flickr.com - granted under creative commons licence - attribution



Photo courtesy of whitepebbles@flickr.com - granted under creative commons licence - attribution

Share!

Volunteer to share your ideas!



Quiz!

Which of these words is an adjective?

A

jumping

B

palace

D

happily

C

amazing

Quiz!

Why do we use similes?

A

To make our writing sound good.

B

To create a picture for the reader.

C

Because we get better marks for it.

D

Because our teacher wants to make our life difficult.

Quiz!

Why do we use similes?

A

The sky was as blue
as the sea

B

The moon was a
pale, silver coin in
the sky.

C

The angry waves
climbed the sea
wall.

D

The howling,
wolf-like baby was
driving me mad.

Quiz!

Pick the best adjective to describe the teeth in the picture. Give reasons.

A

nasty



B

razor-sharp

D

pointy

C

awful