

All week

LC: Can I plan, draft, edit and write a
character profile?

WE ARE NOW GOING TO DRAFT OUR CHARACTER PROFILE

Third Person

Character Profile

Character's Name

What is the character's personality?

Expanded noun phrases

What does the character look like?

Conjunctions

What does the character do?

© Sarah Kirby

What is a character profile?
A character profile is...

Describes the character.

Gives you information.

Write in third person

TODAY WE ARE GOING TO DRAFT OUR WORK BY USING A RANGE OF COHESIVE DEVICES?

What does cohesive mean?

The term 'cohesive devices' refers to the conjunctions and pronouns used to link the parts of a piece of writing.

They bind different parts of a text together and give it unity.



Today we are going to focus on using subordinating conjunctions to improve our work!

Subordinating Conjunctions

What are they?

I S A W A W A B U B

is an acronym to help you remember the first letters of some of the most important subordinating conjunctions.

If

Since

As

When

Although

While

After

Before

Until

Because



Next Steps: Subordinating Conjunctions

So, how do we use subordinating conjunctions?

Subordinating conjunctions are the first words within a subordinate clause. Subordinate clauses do not make sense on their own (they are dependent) but when they are used with a main clause, they create a complex (multi-clause) sentence.

Subordinate clauses will always have a **subject** and **verb** within them, e.g.

before they left

subordinating
conjunction

subject

verb

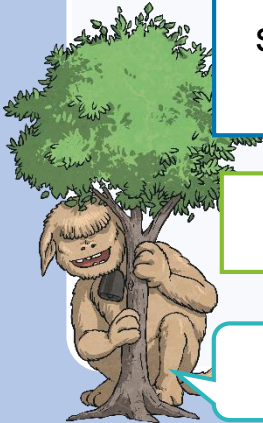
is a subordinate clause

I SAW A WABUB!

before the holidays

here 'before' is being used as
a preposition

is not a subordinate clause



Next Steps: Subordinating Conjunctions

Can you spot the **subordinate clause** and the **subordinating conjunction** in this complex sentence?

Zeus was a mighty, colossal god,
because he ruled the skies.

Zeus was a gargantuan and wise
god, **although** he could treat people
disrespectfully.

Can you think of a sentence of your own?

I SAW A WABUB!

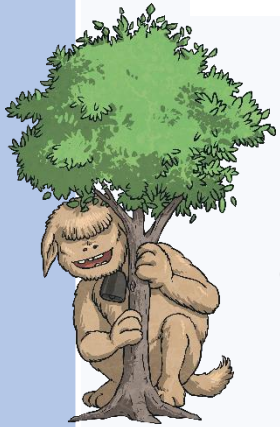


Next Steps: Subordinating Conjunctions

In the complex sentences we have looked at so far, the subordinate clause has always come after the main clause but watch...

Because he ruled the skies, Zeus was a mighty, colossal god.

Althoughhe could treat people disrespectfully, Zeus was a gargantuan and wise god.

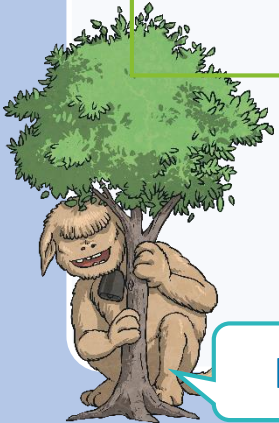


Subordinating conjunctions can also be used as the first word in a complex sentence. When the subordinate clause comes before the main clause, make sure you remember to use a comma to mark where the subordinate clause ends.

Next Steps: Subordinating Conjunctions

Although their feathers aren't yet waterproof, juvenile penguins are able to swim.

Subordinating conjunctions can also be used as the first word in a complex sentence. When the subordinate clause comes before the main clause, make sure you remember to use a comma to mark where the subordinate clause ends.



I SAW A WABUB!

Monday: Plan your character profile about Zeus.

Tuesday: Draft your character profile.

Wednesday: Use colour my grammar to edit your character profile.

Thursday: Write the final copy of your character profile.