

Literacy

LC: Can I use drama to become familiar with a scenario?

WHAT HAS HAPPENED SO FAR?

What obstacles
does he face?

What does he
have to do?



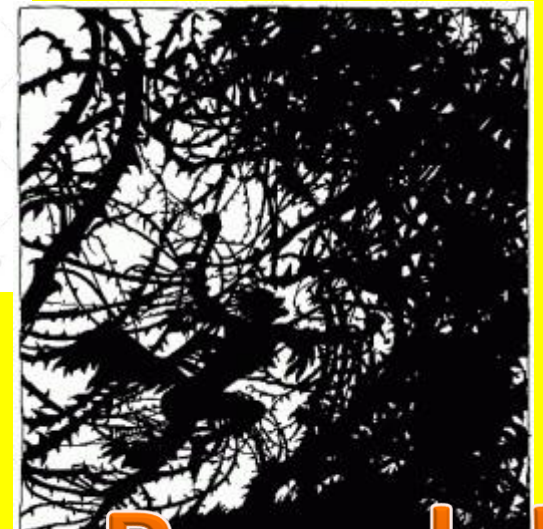
30 SECONDD SUMMARY CHALLENGE

WE ARE NOW GOING TO READ P41 (NOW LUKE) TO END OF PAGE 43

This is NOT a fairy
Tale!

Whilst reading can
you write what
thoughts and feelings
Luke would have
walking through the
bushes and brambles?

What show not tell
could you have?
I think Luke would..
because..



Flaming Brands!

LOOK AT THE TWO EXTRACTS!



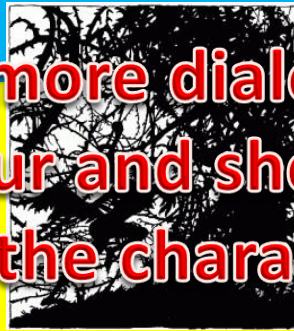
What are the differences between the two scenes?

What does the witch scene use most of?

When reading the text

I think that differences are...

Luke found two nice bits of thick wood and pushed their ends into the fire and waited until they had caught the flame nicely. Armed with flaming brands Luke advanced on the brambles.



Uses more dialogue to add humour and show us more about the characters.

"I'm going to put a nasty spell on you!" cackled the witch.

"Why's that?" asked Luke quite reasonably.

"Because I'm so hideous and you are so handsome I cannot bare the sight of you." And the witch reached into her handbag and pulled out a wand.

"I don't know why you say that?" asked Luke calmly. "I think you're extraordinary."

Today you are going to act out the scene from the witch, emphasising on the humour used by the author but most importantly using the dialogue!

How would you read this?
How would you act it out with expression and humour?



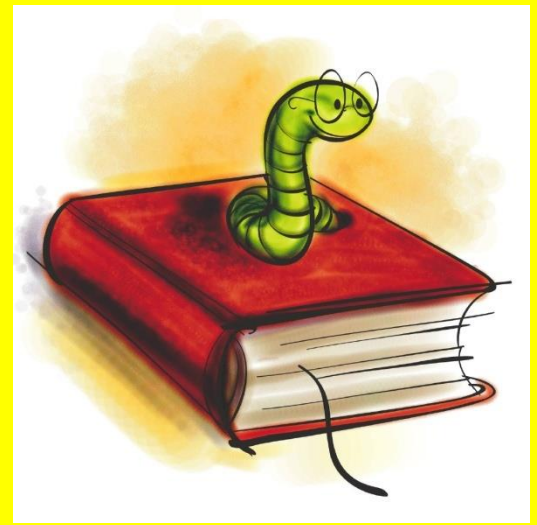
Luke pressed on up the mountain, whistling. All of a sudden out popped the Waggle tooth Witch. She was hairy, she was horrid. She was the ugliest thing he had ever laid eyes on. Her nose was like a giant parrot's beak.

"I'm going to put a nasty spell on you!" cackled the witch.

"Why's that," asked Luke.

"Because I'm so hideous and your so handsome!" and the witch reached for her handbag to pull the wand out.

- I am able to ...
- I am starting to ...
- I am need more support to ...



LC- Can I use show not tell to
write a diary entry?

WHAT HAS HAPPENED SO FAR?

What obstacles does he have to overcome?

Who did he meet?

What was the character like?

**LUKE GOT TURNED INTO
A FROG**

**LUKE LOVED THE
WITCH'S NOSE**

**LUKE WAS VERY
FRIGHTENED**



TRUE OR FALSE?

WE ARE NOW GOING TO READ P44 TO END OF PAGE 47 'RAN AWAY'

Whilst reading, can you make notes on how Luke must have felt when meeting these characters?

What do you think the characters would have felt like?

I think the characters would have felt... because..

This is NOT a fairy Tale!



HOW COULD HE BE FEELING?
WHAT DID YOU FIND OUT?

cautious

anxious



brave

tired

determined

HOW CAN WE IMPROVE THESE WORDS?



Word	Meaning
Brave	Courageous
tired	Exhausted
cautious	Vigilant/wary
Shocked	?

CAN YOU FIND A WORD FOR SHOCKED?

SOMETIMES YOU CAN USE SHOW NOT TELL INSTEAD OF THE WORD



Word	Show not Tell
relieved	?
happy	I ran with a smile
scared	?
Shocked	My mouth hung open. I couldn't believe what I was seeing.

WHAT SHOW NOT TELL COULD WE HAVE FOR SEEING THE BEAR?

HOW CAN WE PUT THIS INTO A DIARY ENTRY?

Dear diary,

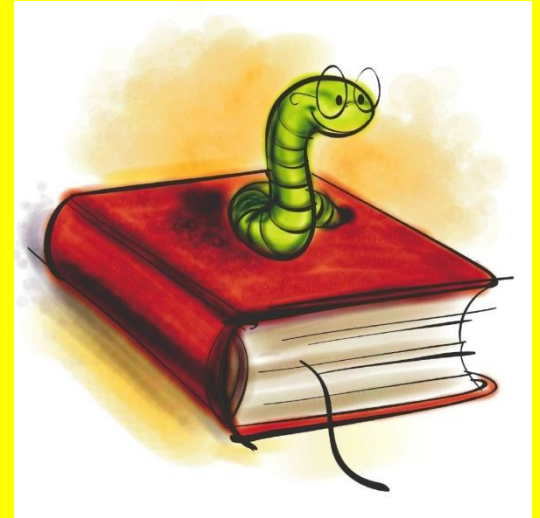
(Informal phrase) but I have finally left the village where there was nothing left for me, well except for the Old Crone ().

I have decided to follow my instinct and make a better life for myself with a companion. The princess Ramona, who lives on top of the mountain.

However it wasn't all easy.....

(Who did you meet? What thoughts? Feelings?)

- I am able to ...
- I am starting to ...
- I am need more support to ...



LC- Can I understand the
narrator's point of view?

WHAT HAS HAPPENED SO FAR?

Who has Luke met so far?

What has he done to pass all of the characters so far?

So far Luke has....

To do this he has..



30 SECONDD SUMMARY CHALLENGE

TODAY WE ARE GOING TO FOCUS ON THE ROLE OF THE NARRATOR

What is the job of the narrator in the story?

The job of the narrator is to..

The job of the narrator is to present stories in ways that the reader can understand. They help to make the story flow.

We are now going to read p47 (soon after) p48 I cannot do that for you.

Whilst reading, can you make note at which point the narrator has added his own opinion?

This is **NOT** a fairy Tale!



WHILST READING CAN YOU MAKE NOTE AT WHICH POINT YOU CAN SEE THE NARRATOR HAS ADDED HIS OWN OPINION!

"Great heavens above," cried Ramona, "someone has actually made it to the top of the mountain and he's rather gorgeous - despite the totally untrendy clothes and strong smell of garlic."

For the sake of decency and so on I am going to leave out the bit where they fall in love and have a smooch, but they did all that and then Luke said it was time to go back down the mountain.

"But I can't," said Ramona. "There's a witch down there, and a bear and trolls and all sorts of horrible creatures and brambles and I might tear my dress."

"We can't stay up here for ever," said Luke. "Down there, at the bottom of the mountain, that is where the rest of the world starts and there is so much to see and to do and I am going to see it and do it and I want you to be with me."

WHILST READING CAN YOU MAKE NOTE AT WHICH POINT YOU CAN SEE THE NARRATOR HAS ADDED HIS OWN OPINION!

"I dearly want to see the rest of the world," murmured Ramona.

"And I want to be with you more than anything else."

But Ramona was very frightened and she would not go down the mountain. Luke eventually set off on his own. "I shall wait for one day," he told her. "After that I shall set off on my own if you have not arrived. You must make up your mind Ramona. You must overcome your own fear. I cannot do that for you."

WHAT DOES THE NARRATOR TELL US?

The narrator is the 'voice' of the story. It can be jokey, solemn or even show strong likes and dislikes. In most stories, the narrator knows everything.

What does the narrator tell us about the princess?

From the statements I know that the narrator think that Ramona is..

"I might tear my dress."



HOW DOES THE NARRATOR DESCRIBE THE CHARACTERS?



**Annoyed/frustrated-
????**



**Scared-
Ramona is
scared because
in the text she
makes up an
excuse that she
will tear her
dress.**

- **I am able to ...**
- **I am starting to ...**
- **I am need more support to ...**

Literacy

LC: Can I explore the dilemma
faced by the main character?

WHAT HAS HAPPENED SO FAR?

Did he meet the princess?

What happened?

Do you think that she will go with him? Why?

I think that Ramona will/will not go down the mountain because...



PREDICTION

WE ARE NOW GOING TO READ P47 (SOON AFTER-END)

Whilst reading, can you make notes on why this text is not a fairy tale after all?

This is not a fairy tale because..

What features of Jeremy Strong did the book use?
The features that were used are..

This is NOT a fairy Tale!



In the end the princess didn't get rescued and the evil characters weren't so evil after all!

WHAT IS A DILEMMA? WHICH CHARACTER HAS THE DILEMMA?

A dilemma is when...

For example...

The character who has the
dilemma is..

A situation in which a
difficult choice has to be
made between two or
more alternatives.



Should Ramona go down the mountain or not?



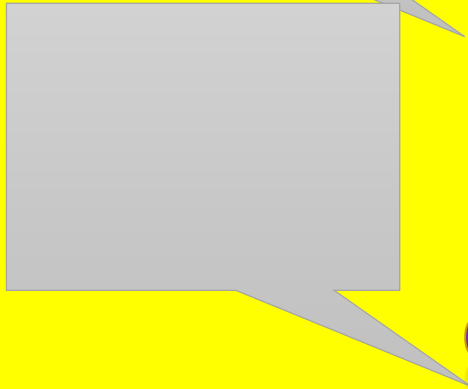
CAN YOU ROLE PLAY HER DILEMMA?



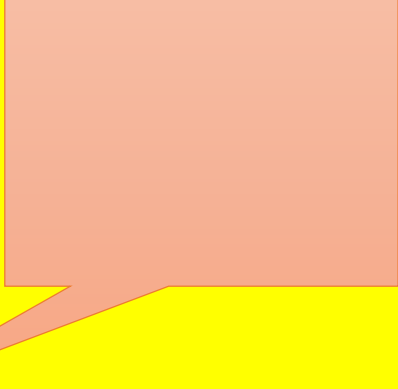
DILEMMA
Should she go down the mountain or not?

How would Ramona have to change in order to go down the mountain?
How would she be persuaded?

Go down you have waited ages for a person to love



What about the man-eating unicorn?



WHAT REASONS
COULD WE HAVE HERE?

- I am able to ...
- I am starting to ...
- I am need more support to ...