



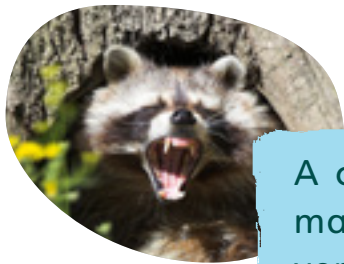
What were the consequences of each event in the text? Write your answers in the spaces below.



The film *Finding Nemo* came out in cinemas.

Consequence ...

A large, empty yellow rectangular box with a torn edge, intended for writing the consequence of the film *Finding Nemo*.



A cartoon made racoons very popular in Japan.

Consequence ...

A large, empty yellow rectangular box with a torn edge, intended for writing the consequence of a cartoon making racoons popular in Japan.



The slow loris are very appealing to poachers and to people as pets.

Consequence ...

A large, empty yellow rectangular box with a torn edge, intended for writing the consequence of slow loris being appealing to poachers and as pets.

Feedback