

LC: Can I use a range of figurative language to describe the character?

WHAT HAS HAPPENED SO FAR?

How do we build tension within a story?

To build tension we use..



Onomatopoeia

Ellipses

Short sentences

Show not Tell

TODAY WE ARE GOING TO WRITE DESCRIPTION OF OUR CREATURES THAT RAMONA MEETS!

When describing a character what do you think you need to include?

Have a look at this description and makes notes on what you think?



Wanda

Wanda, a wicked and selfish witch, was plotting a plan as usual. She cackled and sang (although very badly) as she stirred her cauldron. Her enflamed orange hair tangled and brittle like her mop. Dark black lipstick covered her lips and half of her teeth. Her ragged dress was filthy with ash from her dusty cauldron. Wanda was extremely rude and hated people.

TODAY WE ARE GOING TO WRITE DESCRIPTION OF OUR CREATURES THAT RAMONA MEETS!

Include:

- what they look like;
- what they wear;
- what they sound like;
- how they move;
- anything else you know.



Do you need to include all of this?

HOW CAN WE IMPROVE THIS DESCRIPTION OF THE WITCH?

To improve the description we can use...



Similes

Metaphors

Wanda

Wanda, a wicked and selfish witch, was plotting a plan as usual. She cackled and sang (although very badly) as she stirred her cauldron. Her enflamed orange hair tangled and brittle like her mop. Dark black lipstick covered her lips and half of her teeth. Her ragged dress was filthy with ash from her dusty cauldron. Wanda was extremely rude and hated people.

Expanded Noun

Phrases

What Is an Expanded Noun Phrase?

An expanded noun phrase gives much more detail than a simple noun phrase, for example:



A house

Add a noun to modify

A **country** house

Add adjectives to modify

A **derelict, old** country house

Add a prepositional phrase to give extra details

A derelict, old country house **with boarded and broken windows**

To expand a noun phrase, you can use nouns and adjectives to modify the original noun and prepositional phrases to add extra detail.

CAN YOU WRITE EXAMPLES OF DESCRIPTION ABOUT THE WITCH?

REMEMBER!

Include:

- what they look like;
- what they wear;
- what they sound like;
- how they move;
- anything else you know.



Covered from head to toe in grotesque white pimples



Her loud, creepy cackle echoed through the unforgiving woods

Her fingers were crooked, pointy tree branches
Sharp and poised,

★ Similes ★ Metaphors

★ Expanded Noun Phrases

WHAT SHOULD IT LOOK LIKE?

She was hideous of appearance, mumbling to herself with that dreamy, ghastly smile. Her hair was lank and lustreless, falling around her like strings of rotting straw. A cauldron bubbled slowly in the corner, leaving off the most infernal and rancid vapours. Bits of frogs' legs, bat wings and eyes of newt were scattered around the floor of the cave. Her lupine eyes, savage and cunning, only came to life when she muttered certain arcane words from a spell. They perched above her hawkish and hooked nose. From it sprang the most preposterous wart. It was at least the size of a saucer. It would have been funny if the scene wasn't so Stoker-esque.

Her wheezy, cackling voice rose higher and higher as she neared the end of her incantation. A row of teeth, blackened and broken into stubs, like old tombstones, lay below her fire worshipper-black eyebrows. They hinted at her cruelty as they arced up and over her dead-fish eyes like sickles.

Those eyes suddenly shimmered with the spite of a thousand years as she turned fully towards me and pinned me with her gaze. She traced a leathery tongue around her thin, bloodless lips while she looked me up and down from crown to ankle. Her spindly, arthritic legs moved rapidly, like an old spider, covering the distance between us in a flash. I was transfixed. I couldn't move my arms or legs. I was the fly in the web.

She leaned her face towards mine and I could smell the mildewy and sickly passage of her breath. "Dinner is served", she whispered

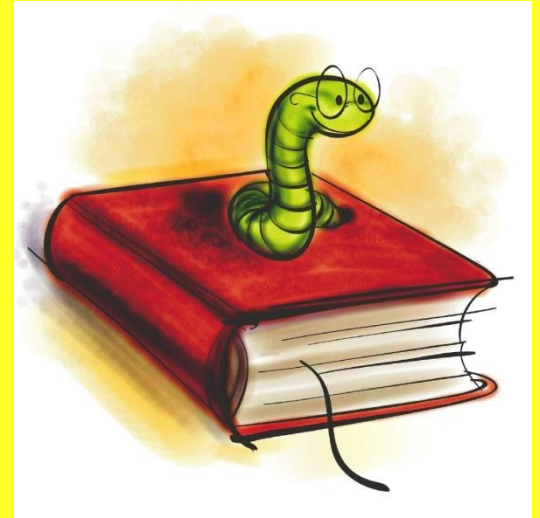


HOW CAN WE INCLUDE THIS IN OUR CHARACTER DESCRIPTION?

Ramona took two steps back to bump into something hard...
she turned to see.....

Use your examples of description!

- **I am able to ...**
- **I am starting to ...**
- **I need more support to ...**



LC- Can I use dialogue, action and description?

WHAT HAS HAPPENED SO FAR?

Can you describe the picture using a range of figurative language?

What can you see?

What writing techniques could you use?



IN THE STORY TODAY WE ARE GOING TO ADD DIALOGUE BETWEEN THE CHARACTERS

What is dialogue?

Dialogue is used between characters, when they talk to each other. It uses inverted commas.



**How do we use
inverted commas?**



HUMAN SENTENCES

**WHO ARE YOU SNARLED THE
WITCH**

**I AM PRINCESS RAMONA AND I AM
LOOKING FOR A MAN NAMED LUKE
RAMONA STATED CONFIDENTLY
THE WITCH KNEW WHO SHE WAS
ON ABOUT, AS ONLY HOURS
BEFORE HE HAD SMOOCHED HER.**

How would we punctuate this speech?

Where would the inverted commas and commas go?

Which part is dialogue, action and description?



What rules do you have to follow when writing dialogue?

- 1)
- 2)
- 3)

CAN YOU NOW CORRECTLY PUNCTUATE THESE SENTENCES?

How would we punctuate this speech?

Where would the inverted commas and commas go?

Which part is dialogue, action and description?

Please don't cast a spell me begged
Ramona

The witch cackled and drew out her
wand.

With anger in her beady evil eyes she
snarled you can't have him my dear.
He kissed me not you



What rules do you have to follow when writing dialogue?

1) Punctuation inside the inverted commas

2) Start a new line for each character's speech

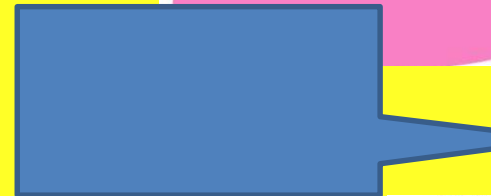
YOUR TURN!

Can you now write dialogue between your characters in your story, using what you have learned? It may be the first 2 or 3 lines.

Now let your partner green pen mark it! Have they:

- Started a new line for each character
- Used inverted commas correctly.
- Used capital letters and full stops.
- Used commas correctly
- Used dialogue, action and description.

Score them out of 5!



HOW CAN WE INCLUDE THIS IN OUR STORY?

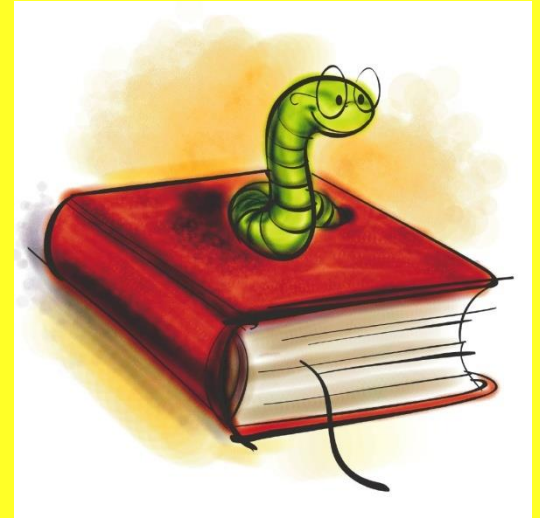
"Are you the man eating unicorn?" quivered Ramona.

"I am," snorted the huge devilish horse, whose hooves dug into the ground." You should not have gone down the mountain."

Romana began to get light headed, but nothing was not going to get in her way.



- **I am able to ...**
- **I am starting to ...**
- **I need more support to ...**



LC- Can I write the ending of the story using thoughts and feelings?

WHAT HAS HAPPENED SO FAR?

Can you punctuate the speech correctly?



1. Which **punctuation mark** is missing from the sentence? Tick the correct box.

“Can I have more chocolate now” Molly asked.

.	,	!	?

2. Put the missing **inverted commas** in each sentence.

- a) The girl said, I'm very tired of eating all this chocolate.
- b) I'm very tired of eating all this chocolate, the girl said.
- c) I'm very tired, the girl said, of eating all this chocolate.

WHAT IS WRONG WITH THE SPEECH?

TODAY WE ARE GOING TO WRITE THE ENDING WHERE SHE FINALLY GET TO THE VILLAGE AND SEES LUKE.

What could the ending be
in our story?
The ending could be...



REMEMBER we are
writing in the style of
Jeremy Strong!
How would he write the
ending? What are the
features of his story?

Luke has found another!





HOW DO YOU THINK RAMONA FELT? WHAT DID SHE THINK?

Ramona felt....because...

With a great sigh Ramona finally got to the village, which was ramshackle and looked very cold and damp. This was not what she was expecting, but all she cared about was Luke and seeing him again so they could start their adventure.

Ramona started to look frantically around the village asking everyone she could find (most of them were confused) until one lovely, old man pointed her in the direction. She couldn't believe it, she had past the man eating unicorn, been brave enough to go through the eerie, cold forest and now she would be rewarded. There he was, her heart lifted she ran quickly with the wind in her hair. Nothing could stop her now until.....

He turned around and Ramona fell to her knees. How could this be? She thought. Am I late?

Ramona had turned to what was her prince holding another women, looking thrilled.



HOW DO YOU THINK RAMONA FELT? WHAT DID SHE THINK?

Ramona felt....because...

Devastated

Deceived

Rage

Betrayed

Perplexed





WHERE COULD WE ADD A FEELING OR THOUGHT IN THIS TEXT?

I would add it .. because...

With a great sigh Ramona finally got to the village, which was ramshackle and looked very cold and damp. This was not what she was expecting, but all she cared about was Luke and seeing him again so they could start their adventure.

Ramona started to look frantically around the village asking everyone she could find (most of them were confused) until one lovely, old man pointed her in the direction. She couldn't believe it, she had past the man eating unicorn, been brave enough to go through the eerie, cold forest and now she would be rewarded. There he was, her heart lifted she ran quickly with the wind in her hair. Nothing could stop her now until.....

He turned around and Ramona fell to her knees. How could this be? She thought. Am I late?

Ramona had turned to what was her prince holding another women, looking thrilled.



LAYOUT

With a great sigh Ramona finally got to the village.....

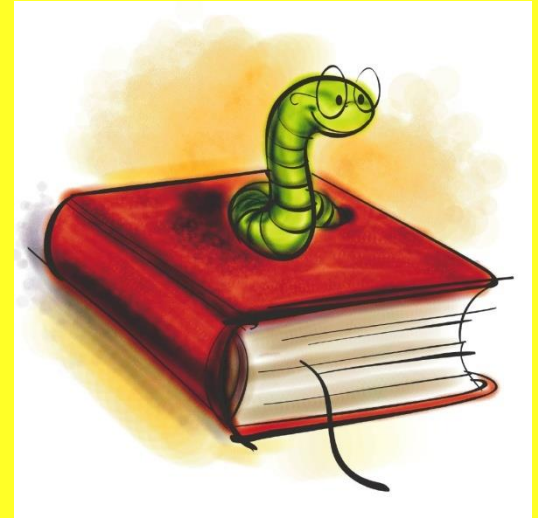
Ramona started to look frantically around the village

.....

He turned around

Ramona had turned to what was her prince holding another women, looking thrilled.

- **I am able to ...**
- **I am starting to ...**
- **I need more support to ...**



LC: Can I edit and improve my
work?

- **I am able to ...**
- **I am starting to ...**
- **I need more support to ...**