

LC: Can I understand what reversible and irreversible changes are?



We are able to change materials in different ways, we can:

Bend them



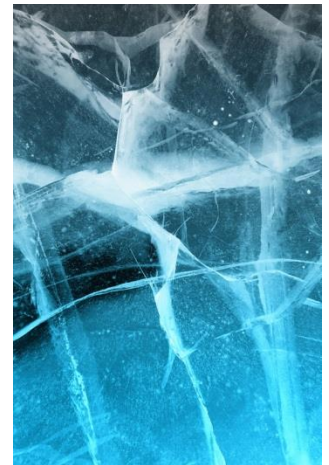
Burn them



Melt them



Cool them



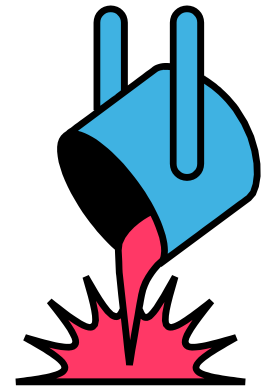
Reversible means you can change a material and then change it back again.



Irreversible means that when you change something in some way you can never get it back to how it was.



Watch this short clip and look out for processes that are reversible and ones which are irreversible. We will talk about it afterwards.



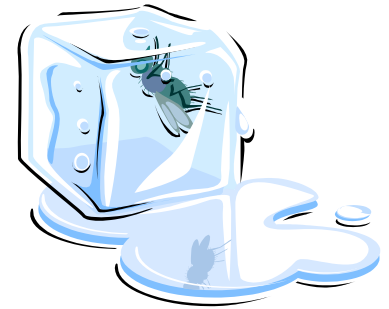
<http://www.bbc.co.uk/learningzone/clips/changes-in-the-state-of-materials-no-narration/2286.html>

Do you think these changes are reversible or irreversible?

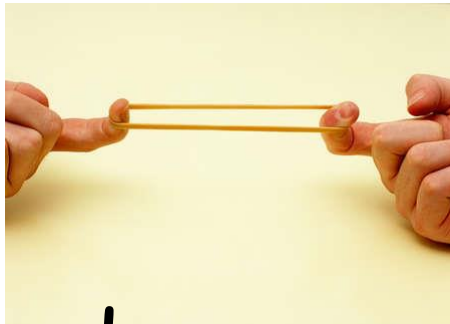
Burnt toast



Melted ice



Elastic stretched



Bent metal



Create an informative poster about reversible and irreversible changes.

You can use the internet to research more about them.