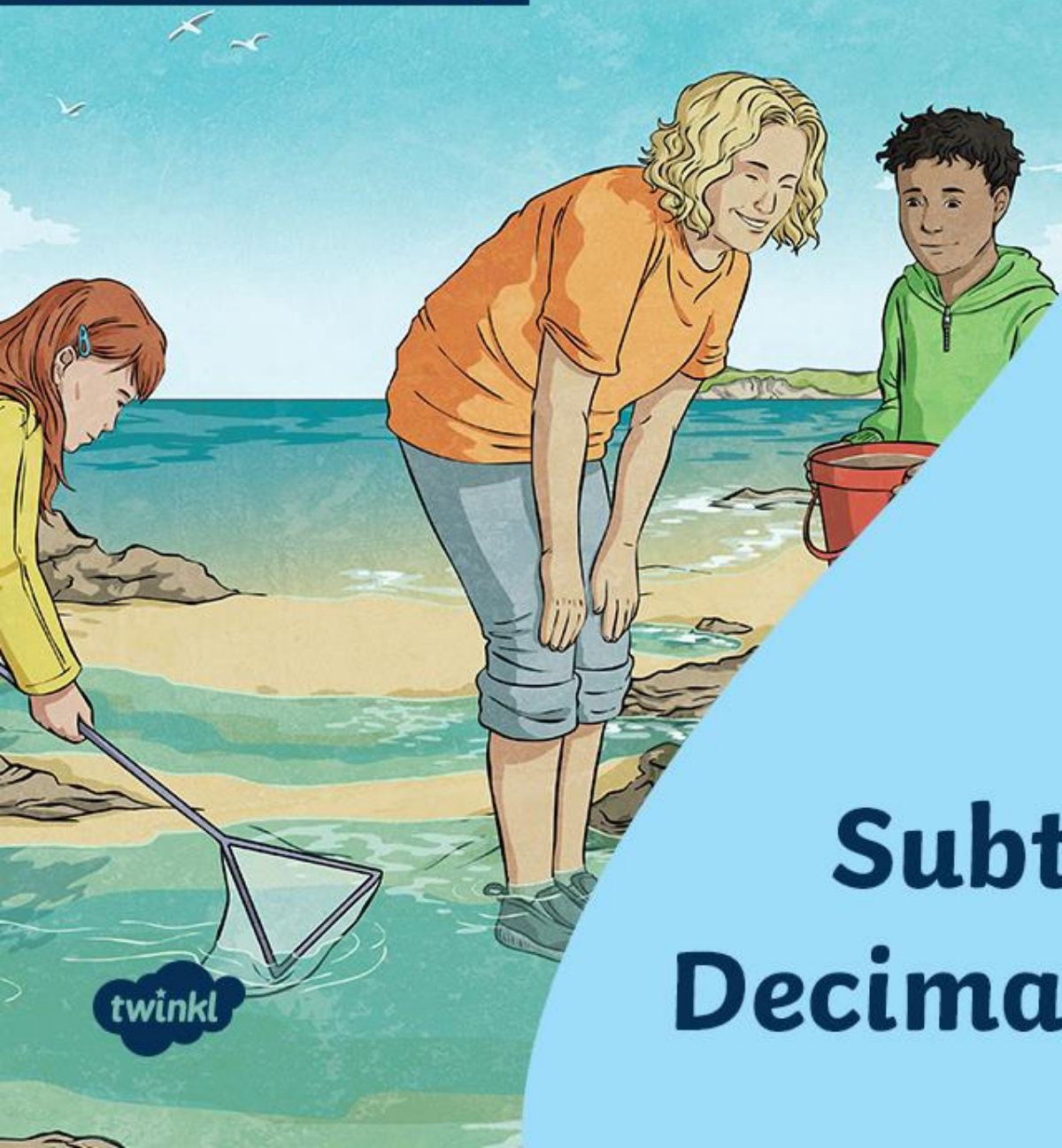


Diving into Mastery



Subtracting Decimals within 1



Diving into Mastery Guidance for Educators

Each activity sheet is split into three sections, diving, deeper and deepest, which are represented by the following icons:



Diving



Deeper



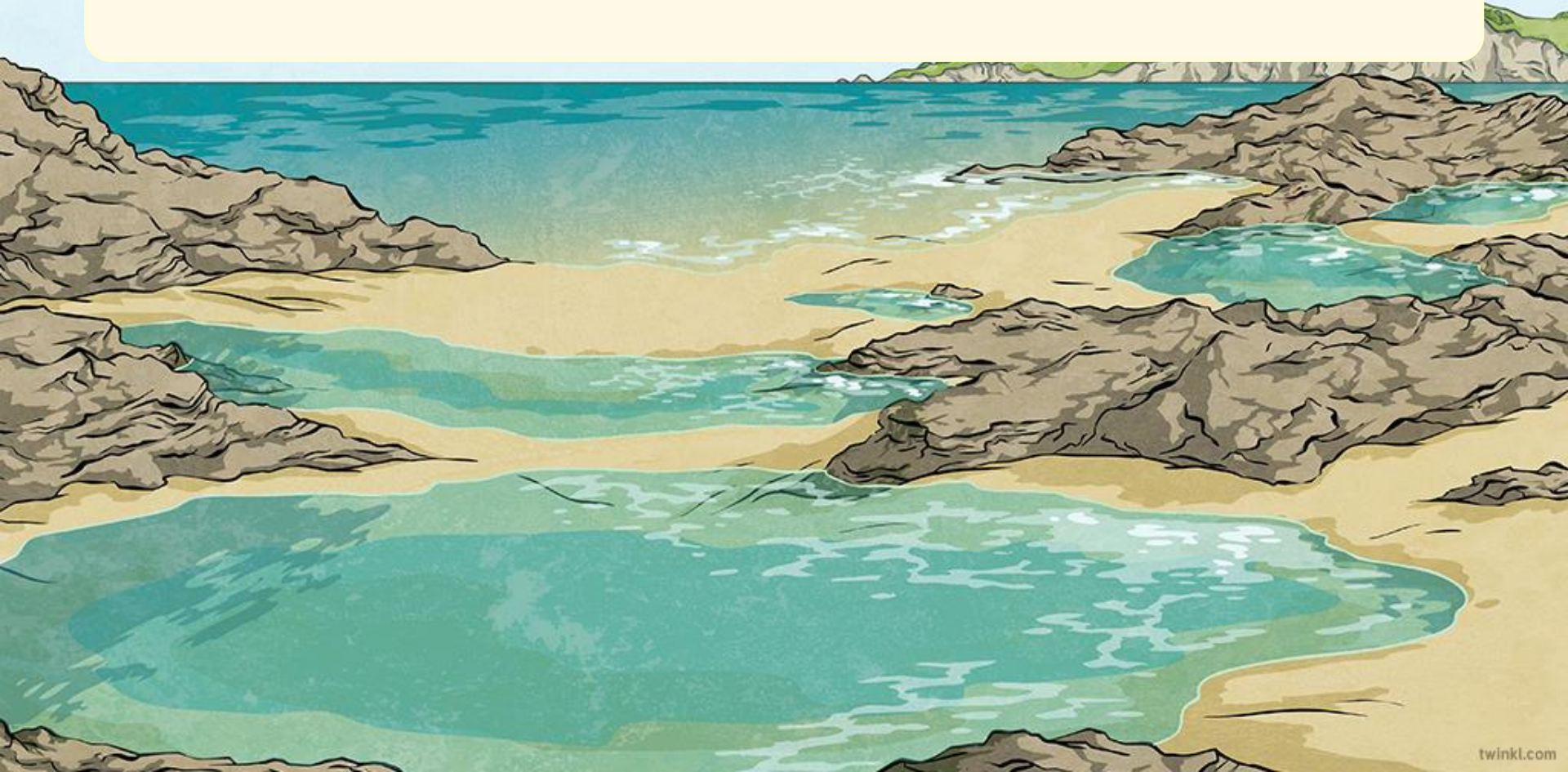
Deepest

These carefully designed activities take your children through a learning journey, initially ensuring they are fluent with the key concept being taught; then applying this to a range of reasoning and problem-solving activities.

These sheets might not necessarily be used in a linear way. Some children might begin at the 'Deeper' section and in fact, others may 'dive straight in' to the 'Deepest' section if they have already mastered the skill and are applying this to show their depth of understanding.

Aim

- Solve problems involving number up to three decimal places.



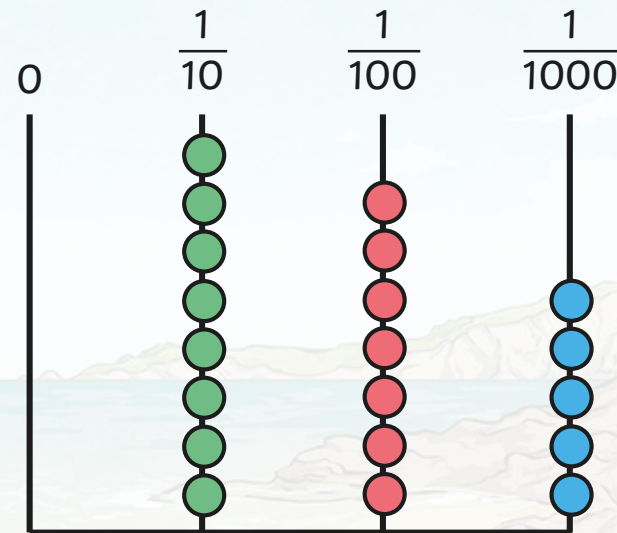
Subtracting Decimals within 1

Diving



Your starting number is the decimal number shown on the abacus.

Follow the clues in the maze, answering each question as you go.



<p>Starting Number:</p> <p>0.875</p>	<p>a) Four-hundredths less</p> <p>0.835</p>	<p>b) Take away 0.003</p> <p>0.832</p>
<p>e) What do I need to subtract to make the decimal number equivalent to $\frac{1}{10}$?</p> <p>0.231</p>	<p>d) 3 tenths less</p> <p>0.331</p>	<p>c) Subtract 0.201</p> <p>0.631</p>

Subtracting Decimals within 1

Diving



Answer these calculations using the most efficient method. How did you work each one out?

$$0.732 - 0.501 = 0.231$$

$$0.53 - 0.214 = 0.316$$

$$0.607 - 0.126 = 0.481$$

$$0.6 - 0.134 = 0.466$$



Subtracting Decimals within 1

Deeper



Gareth has completed his written method but has made a mistake. What has he done wrong? Explain and complete the calculation correctly.

	0	•	6	7	3
-	0	•	2	4	5
	0	•	4	3	2

Gareth has not subtracted the thousandths correctly. He should have regrouped a hundredth to enable him to complete 13 thousandths – 5 thousandths.

0.428 is the correct answer.





Here is part of a calculation. Complete the subtraction so that the answer has three decimal places.

There are many different answers.
Here is one possible solution:

	0	•	6	7	3
-	0	•	?	?	?
	?	•	?	?	?





Here is part of a calculation. Complete the subtraction so that the answer has two decimal places.

There are many different answers.
Here is one possible solution:

	0	•	6	7	3
-	0	•	?	?	?
	?	•	?	?	?





Here is part of a calculation. Complete the subtraction so that the answer has one decimal place.

There is more than one answer.
Here is one possible solution:

	0	•	6	7	3
-	0	•	?	?	?
	?	•	?	?	?





Find 4 possible solutions to this calculation.

There are many different answers. Here is one possible solution:

	0	•	?	?	?
-	0	•	?	?	5
	0	•	?	?	3

$$0.238 - 0.115 = 0.123$$

$$0.738 - 0.245 = 0.493$$

$$0.788 - 0.125 = 0.663$$

$$0.218 - 0.105 = 0.113$$



Subtracting Decimals within 1

Deepest



Now write a subtraction calculation that involves at least one exchange.

	0	•	?	?	?
-	0	•	?	?	5
	0	•	?	?	3

There are many different answers.
Here is one possible solution:

$$0.738 - 0.265 = 0.473$$



Need Planning to Complement this Resource?

National Curriculum Aim

Solve problems involving number up to three decimal places.

For more planning resources to support this aim, [click here](#).

Decimal Number Sequences

Identify how the decimal number sequence is increasing or decreasing. This is called the term-to-term ratio.

What will the next three numbers in the sequence be?

Decimal Addition and Subtraction

Subtracting Decimals

We can solve two problems using grid to help us subtract decimal numbers.

$$0.314 - 0.223 = 0.091$$

Fractions: Decimal Addition and Subtraction

Problem	Operation	Answer
1.58 + 2.21	+	3.79
3.78 - 2.21	-	1.57
2.54 + 0.91	+	3.45
4.81 - 0.91	-	3.90

Shape Problems Challenge Card

twinkl planit

Pet Weights Problem Solving

I can solve problems involving numbers up to three decimal places.

Pet	Weight
	2.1kg
	1.2kg
	0.5kg
	5.2kg
	6.4kg
	0.05kg
	0.8kg

1. Calculate the total weight of these pairs of pets:

+ = _____

+ = _____

2. Circle the combination of pets which weigh the most.

or = _____

3. If each pet puts on 0.8kg of weight, what would their new weights be?

twinkl planit

Twinkl PlanIt is our award-winning scheme of work with over 4000 resources.





twinkl